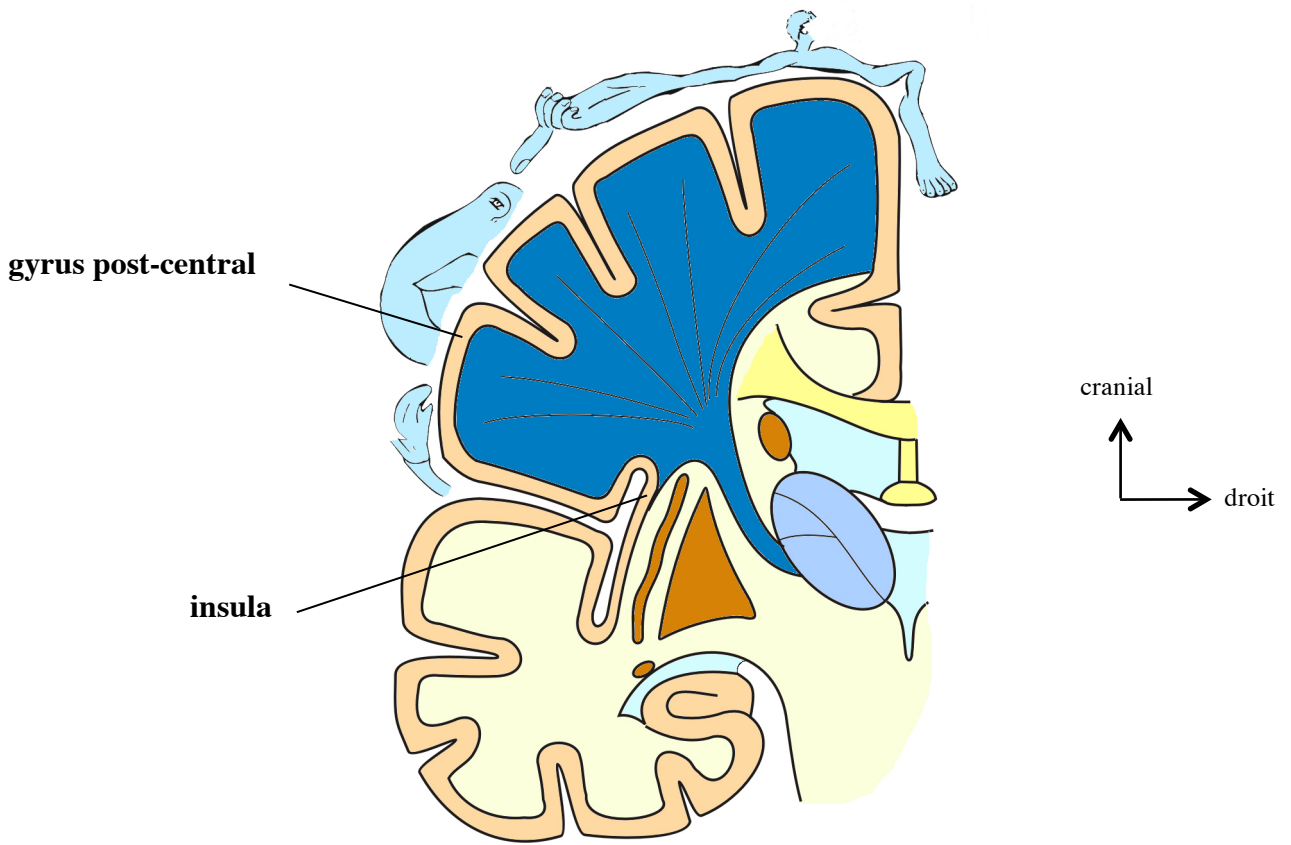
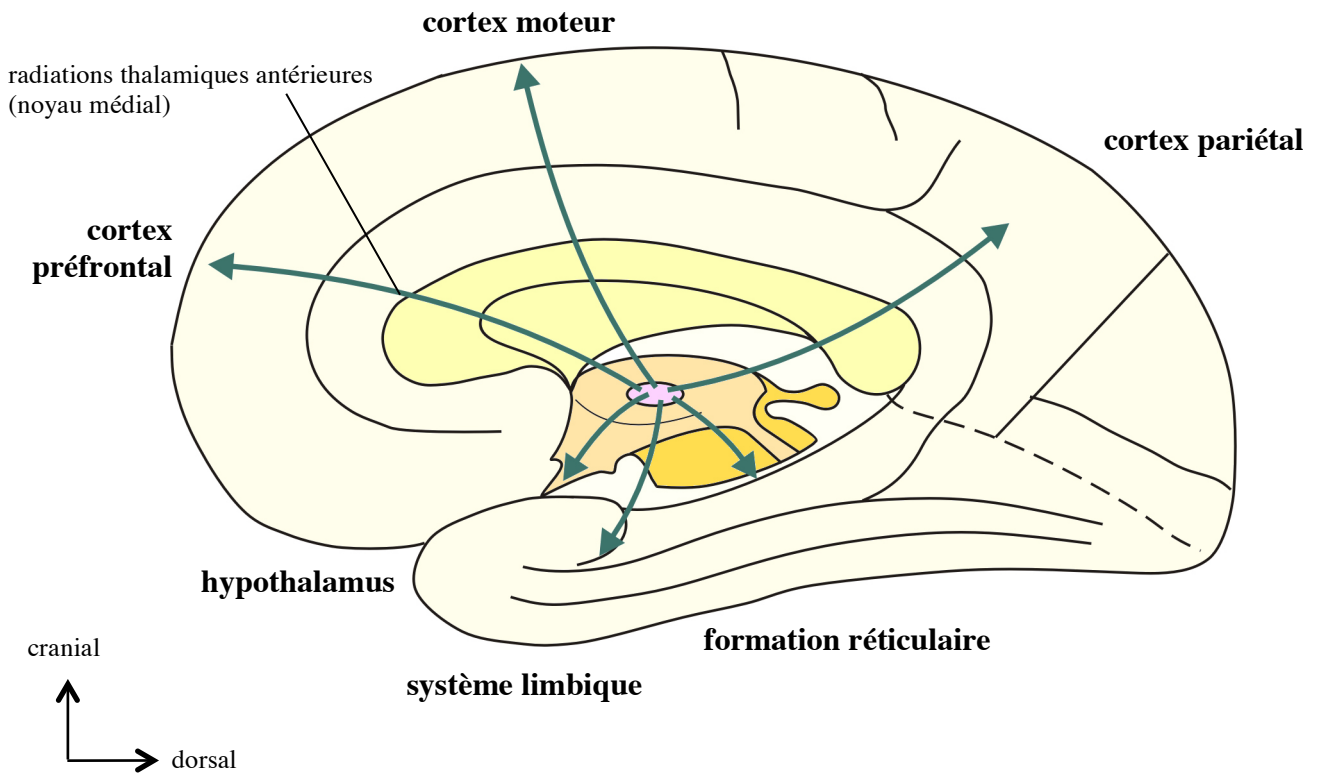


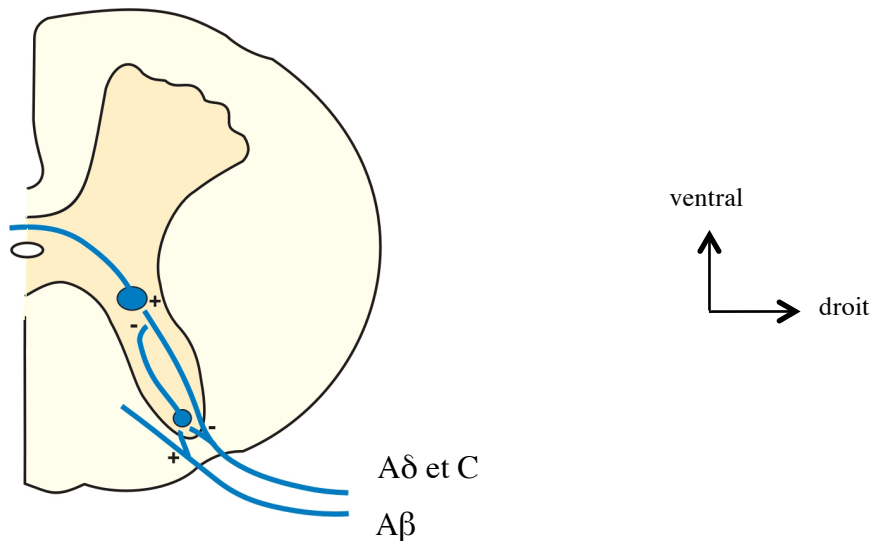
Voies de la sensibilité protopathique, nociceptive



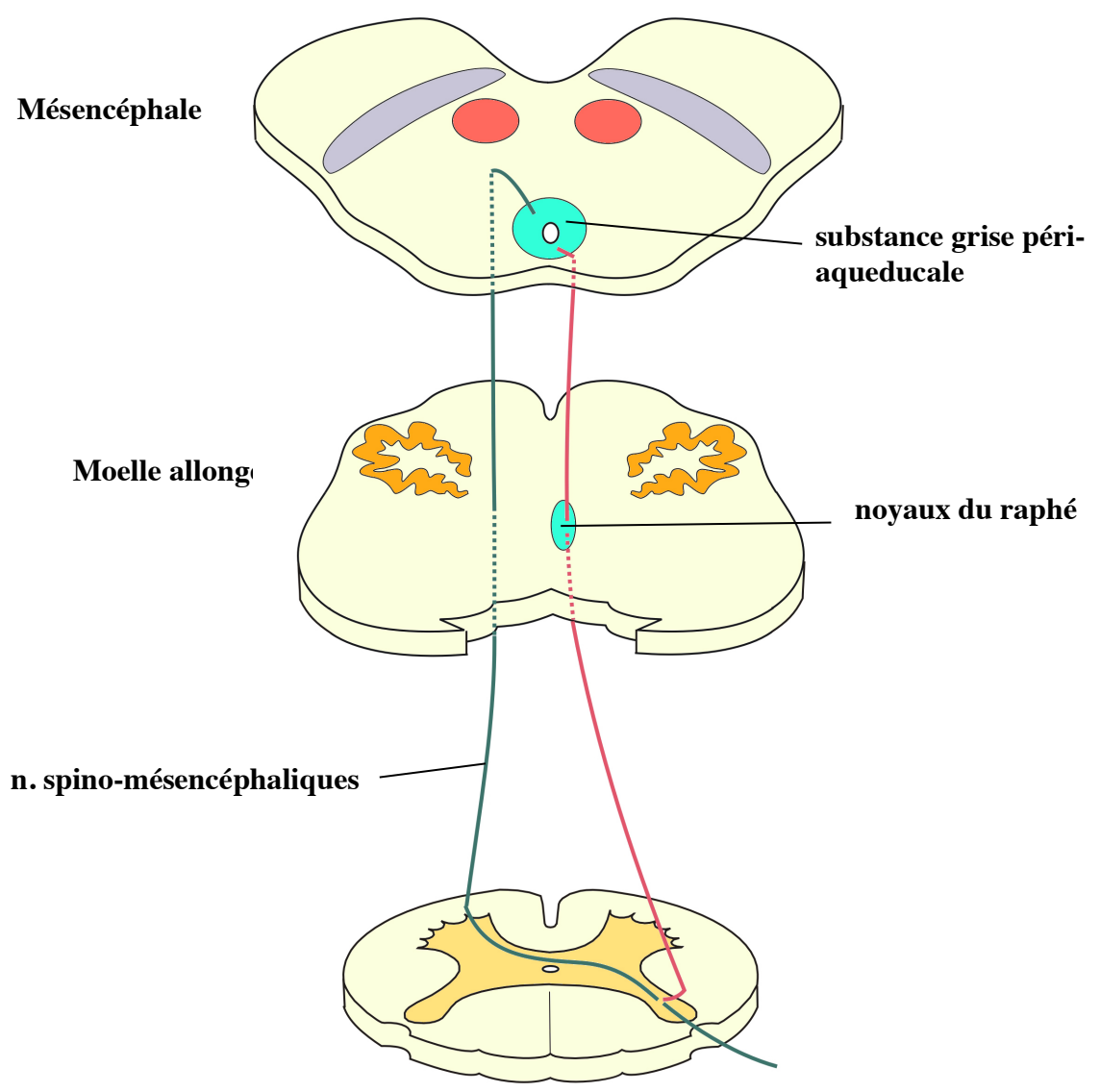
Projections corticales du tractus néo-spino-thalamique



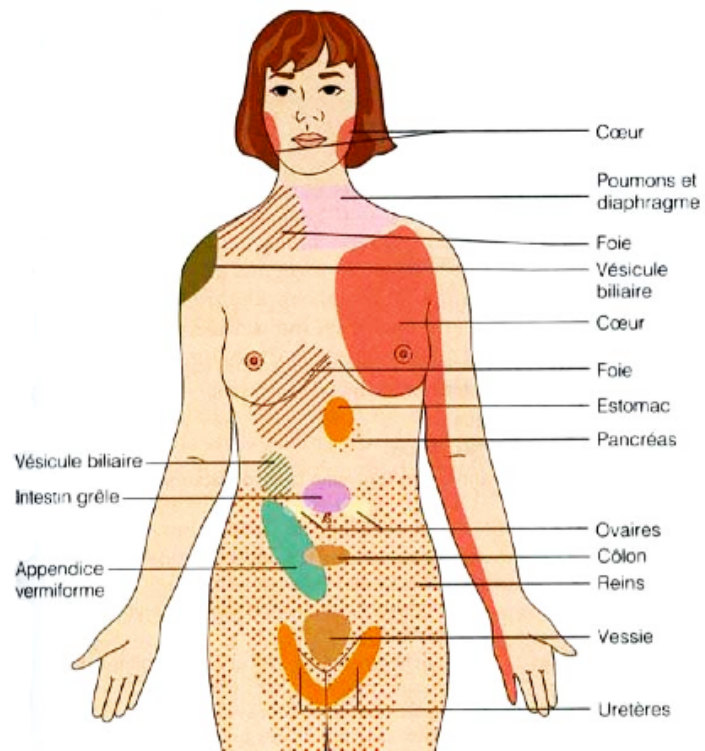
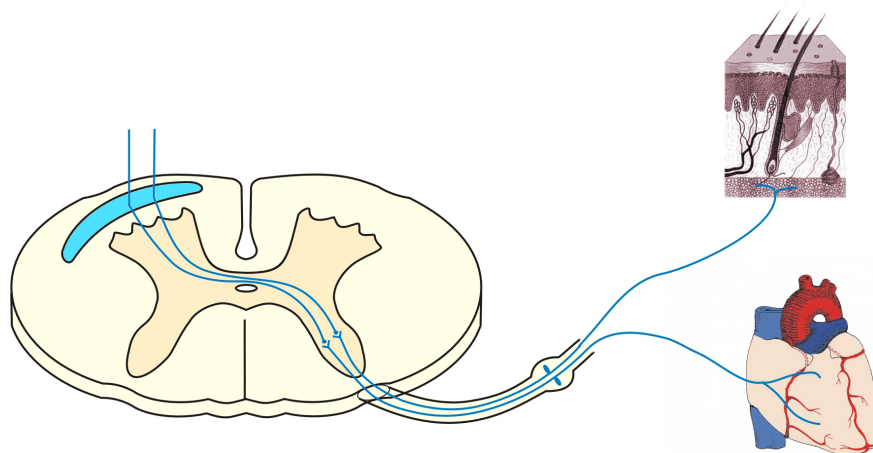
Projections des noyaux intra-laminaires du thalamus



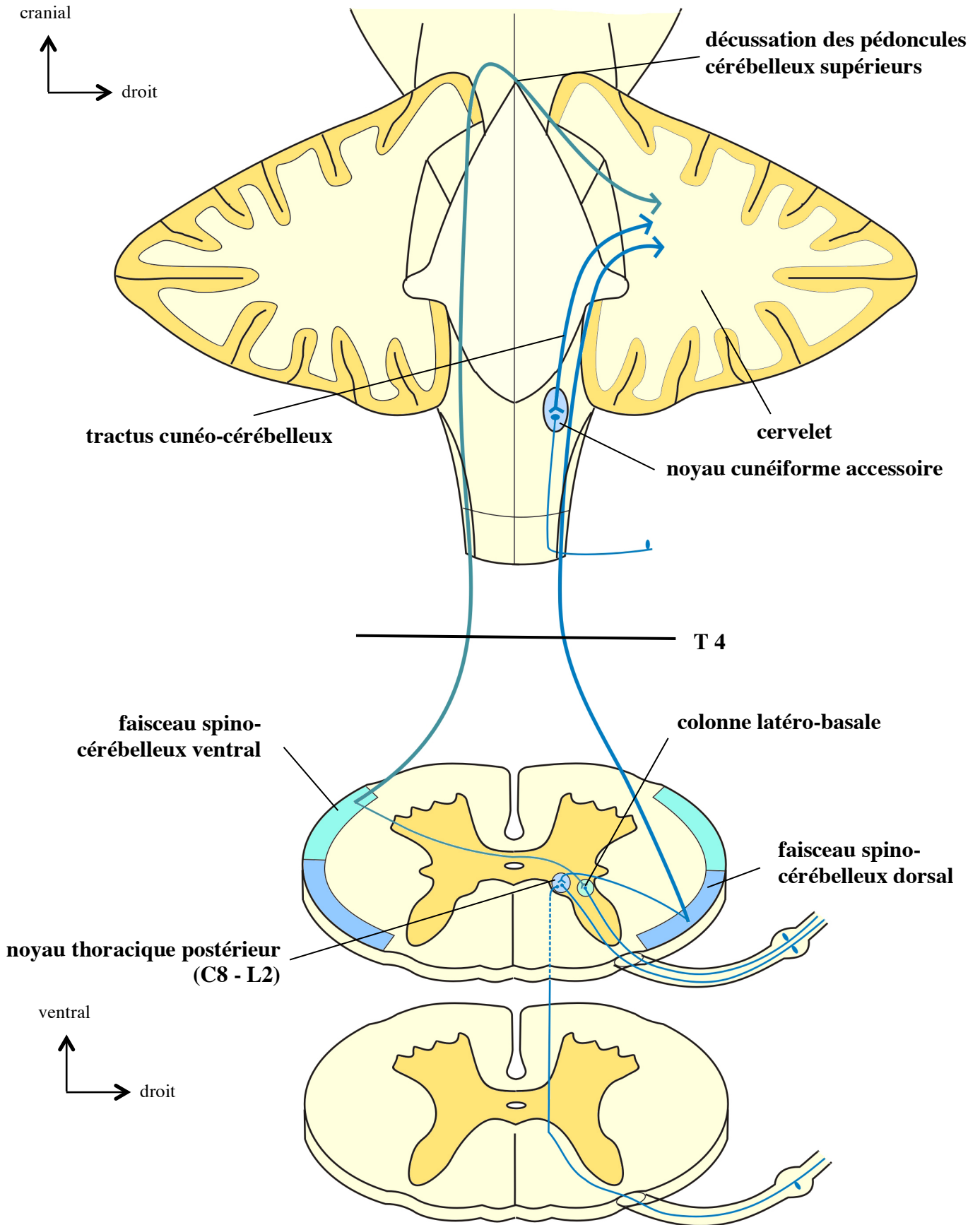
Le contrôle de la porte (gate control)



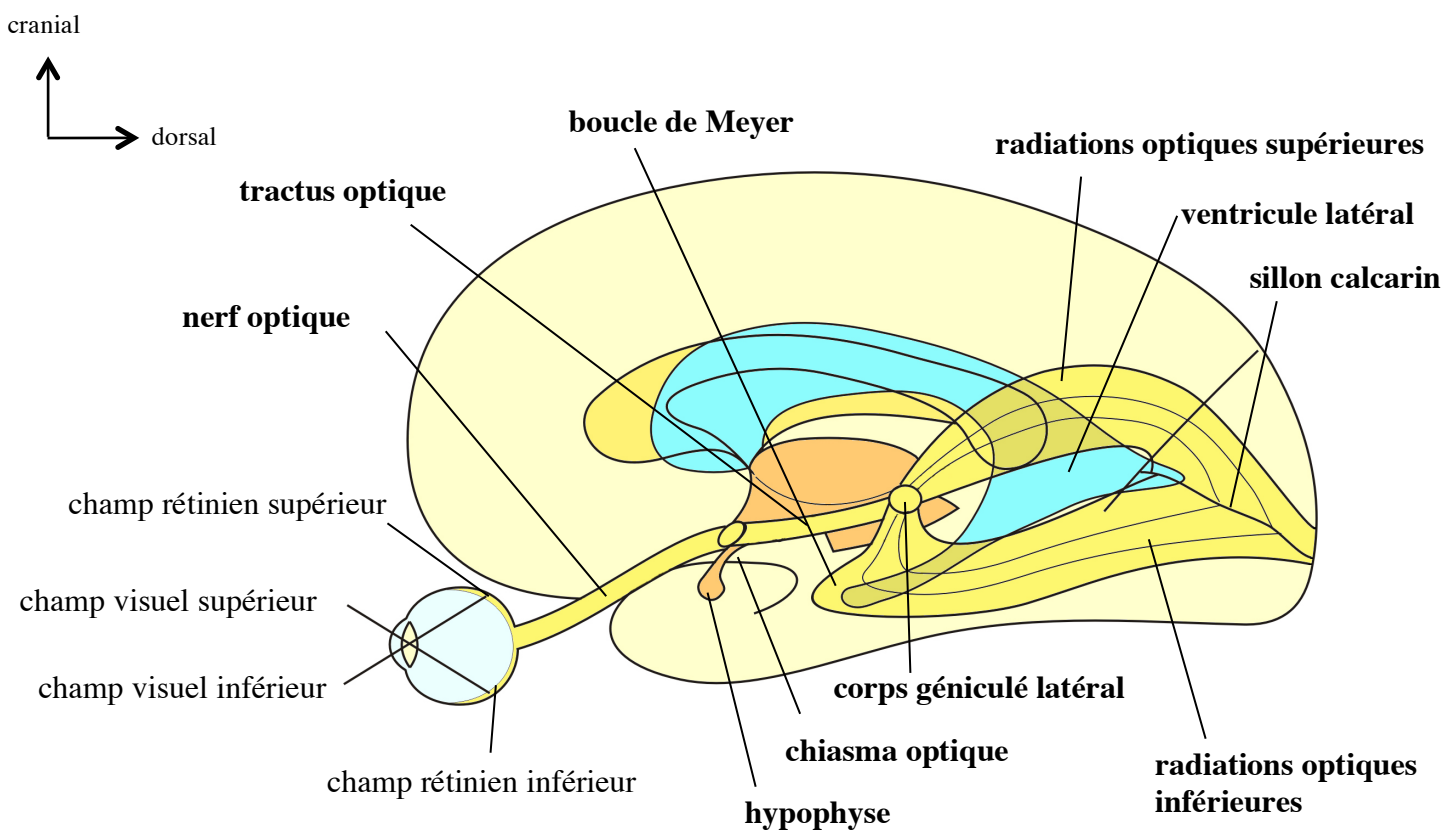
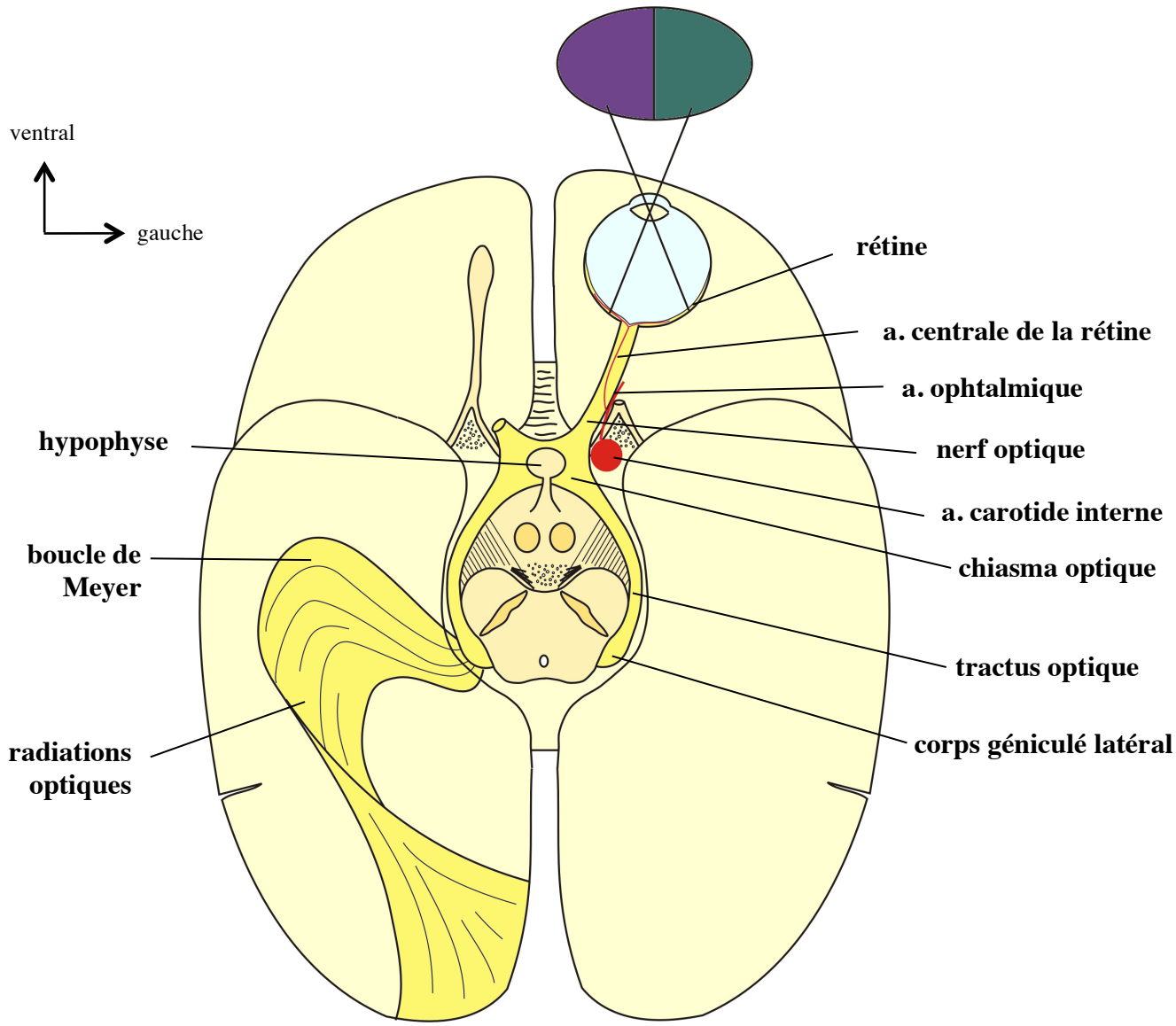
Le contrôle supra-segmentaire par la formation réticulaire



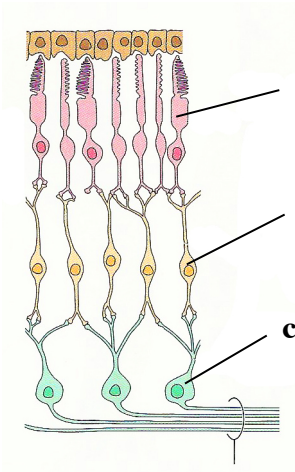
Les douleurs projetées



Les voies de la sensibilité proprioceptive inconsciente



Les voies visuelles



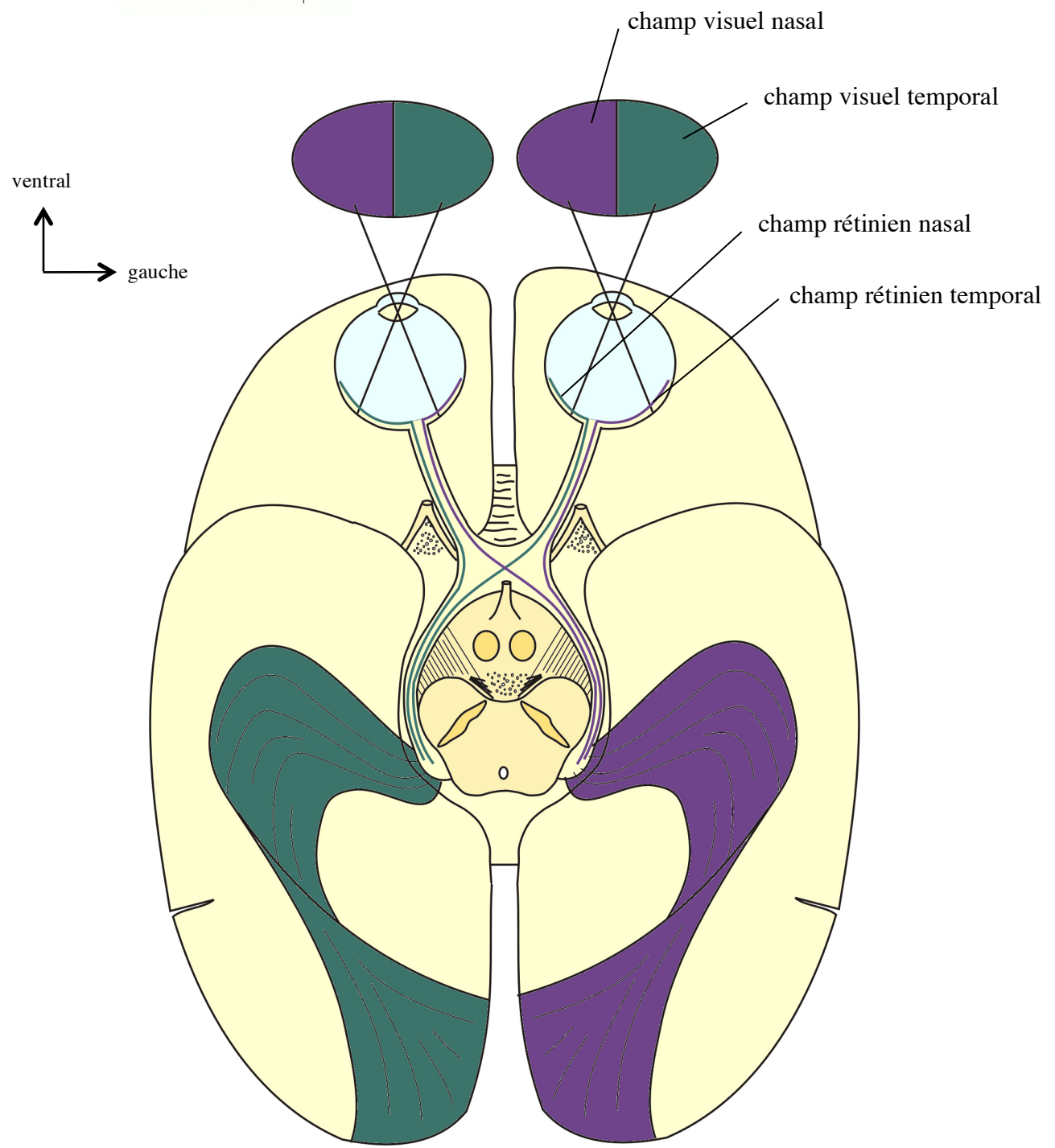
cônes et bâtonnets

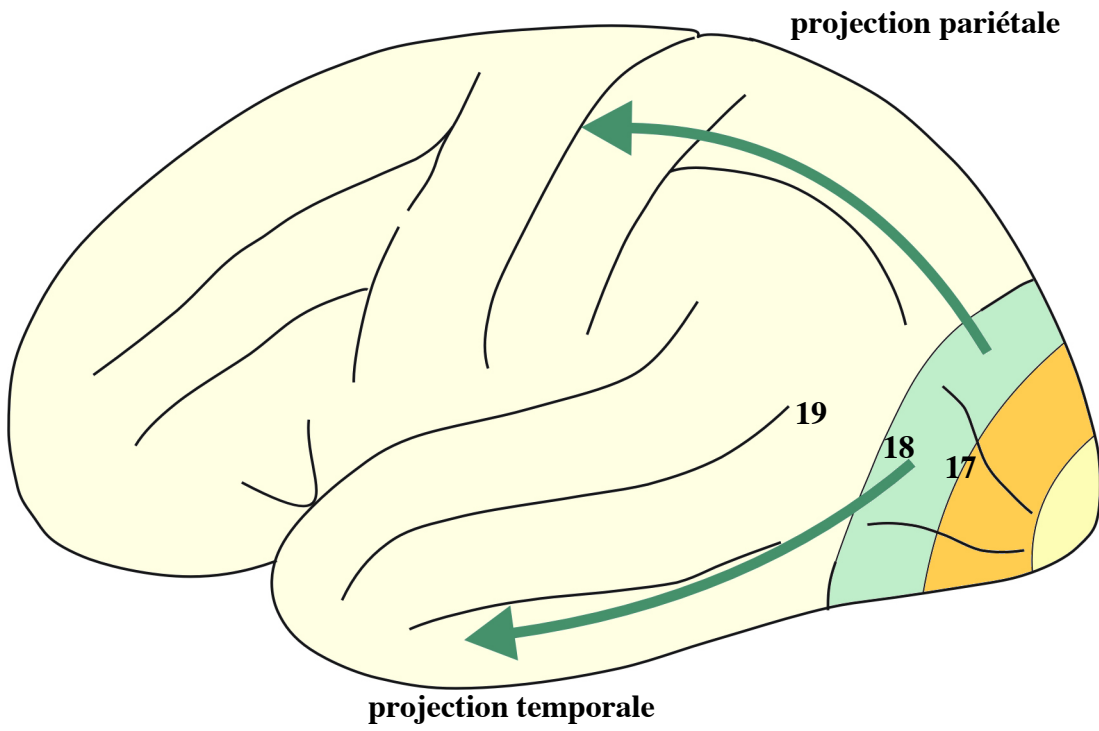
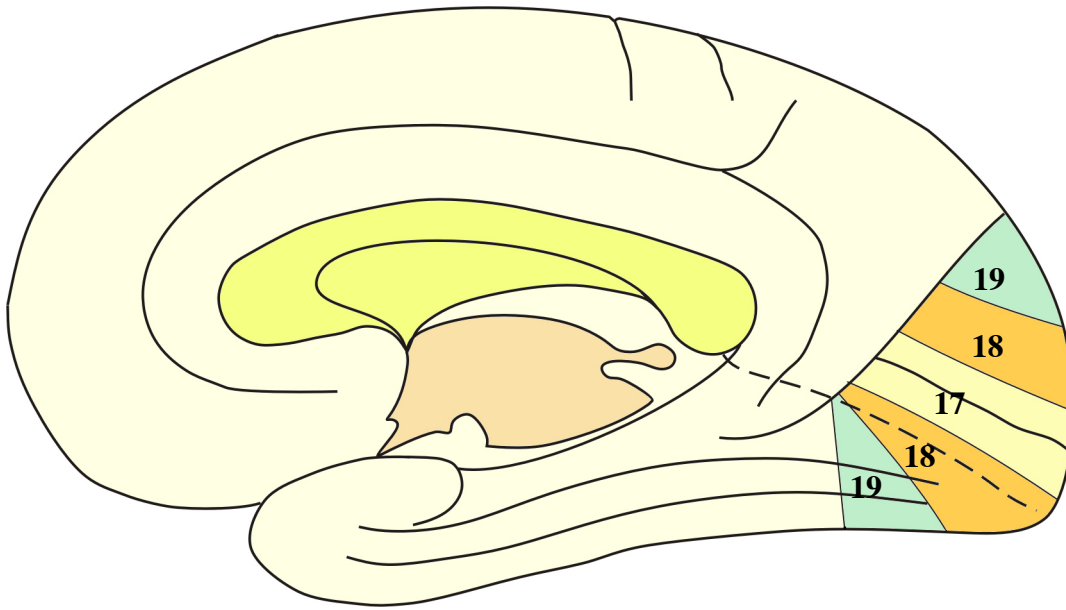
neurone bipolaire

cellule ganglionnaire

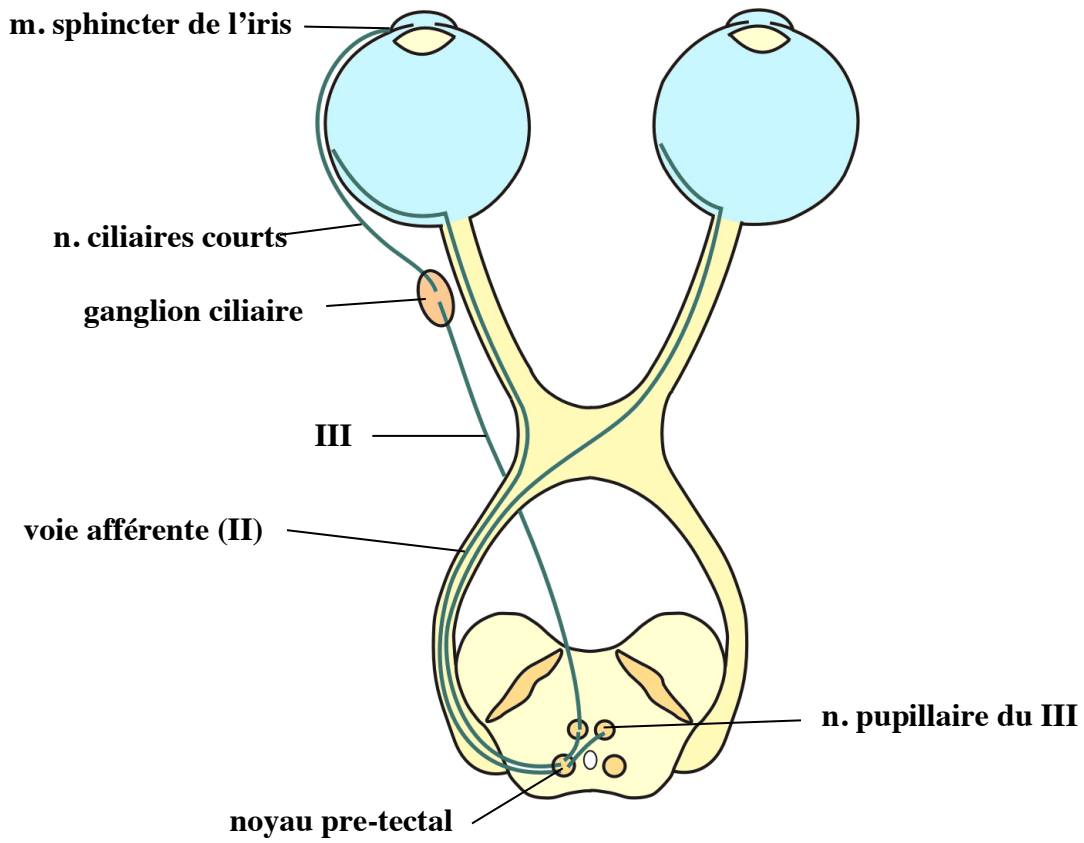
nerf optique

La rétine

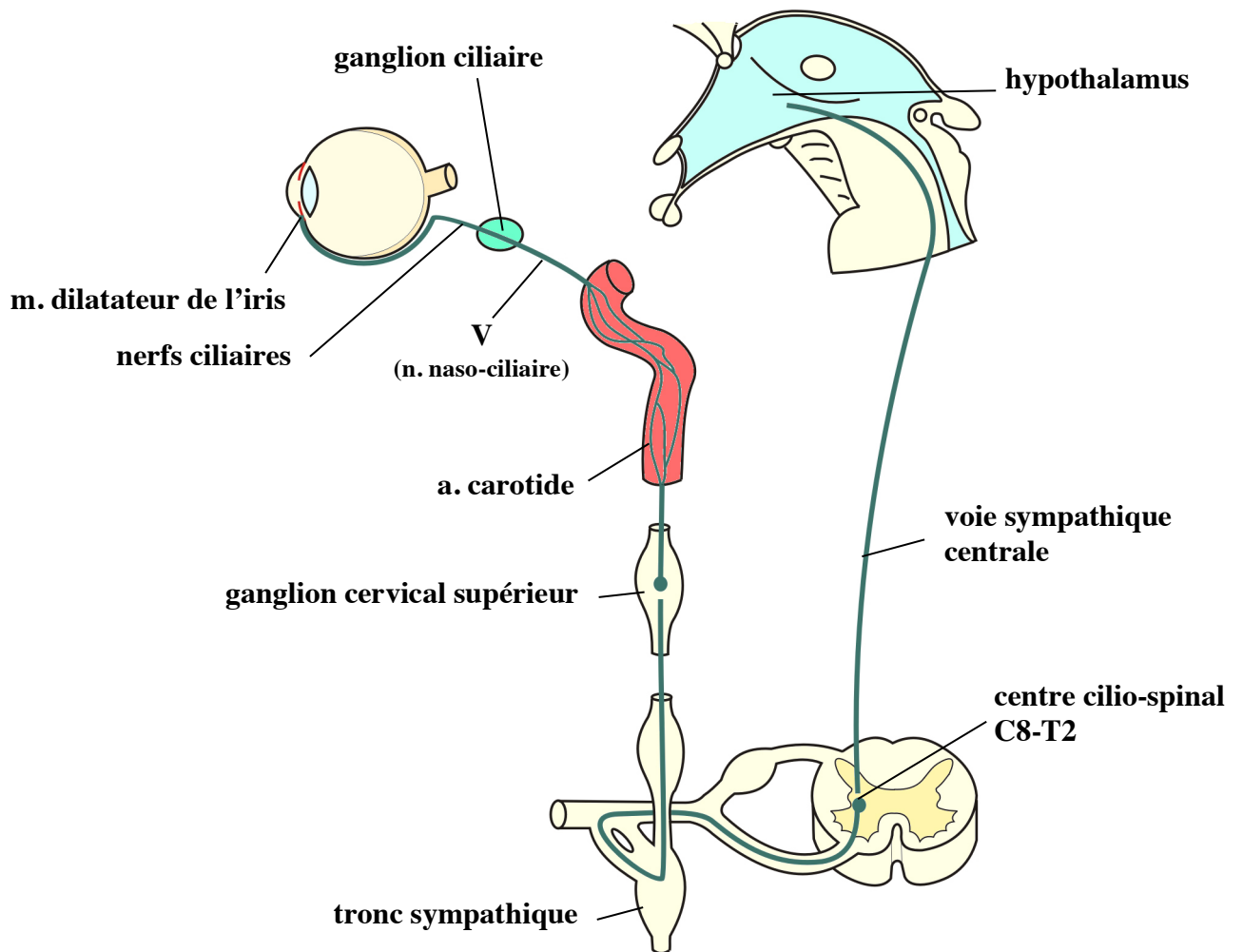




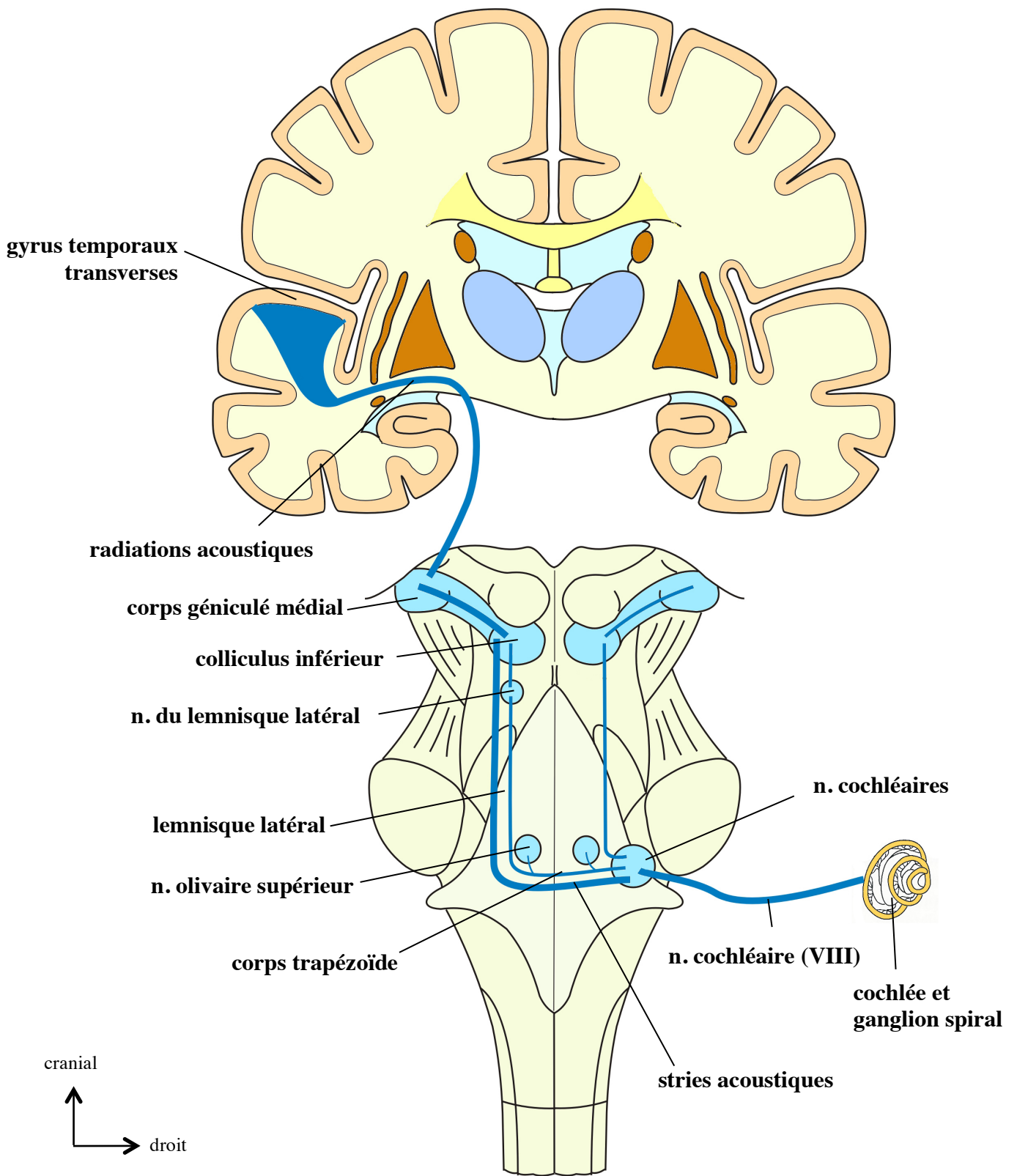
Les aires corticales visuelles



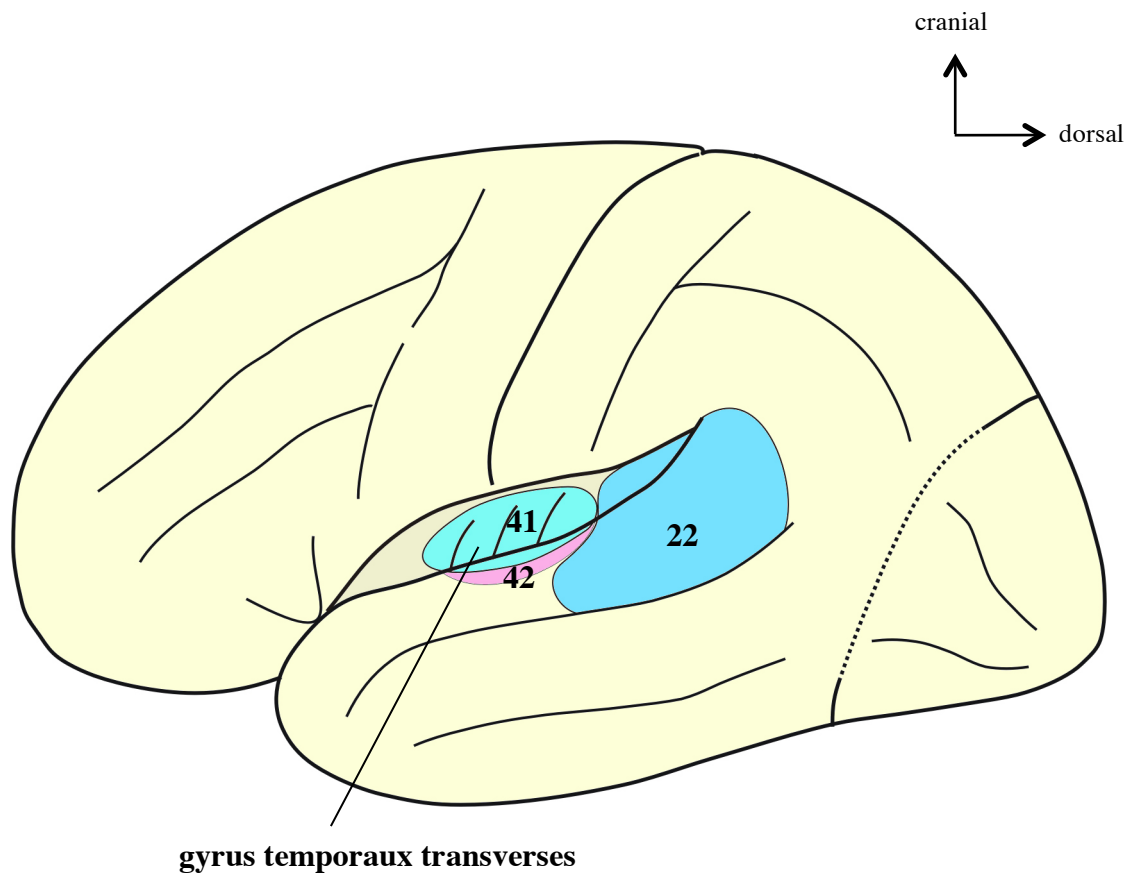
Iridoconstriction (réflexe photomoteur)



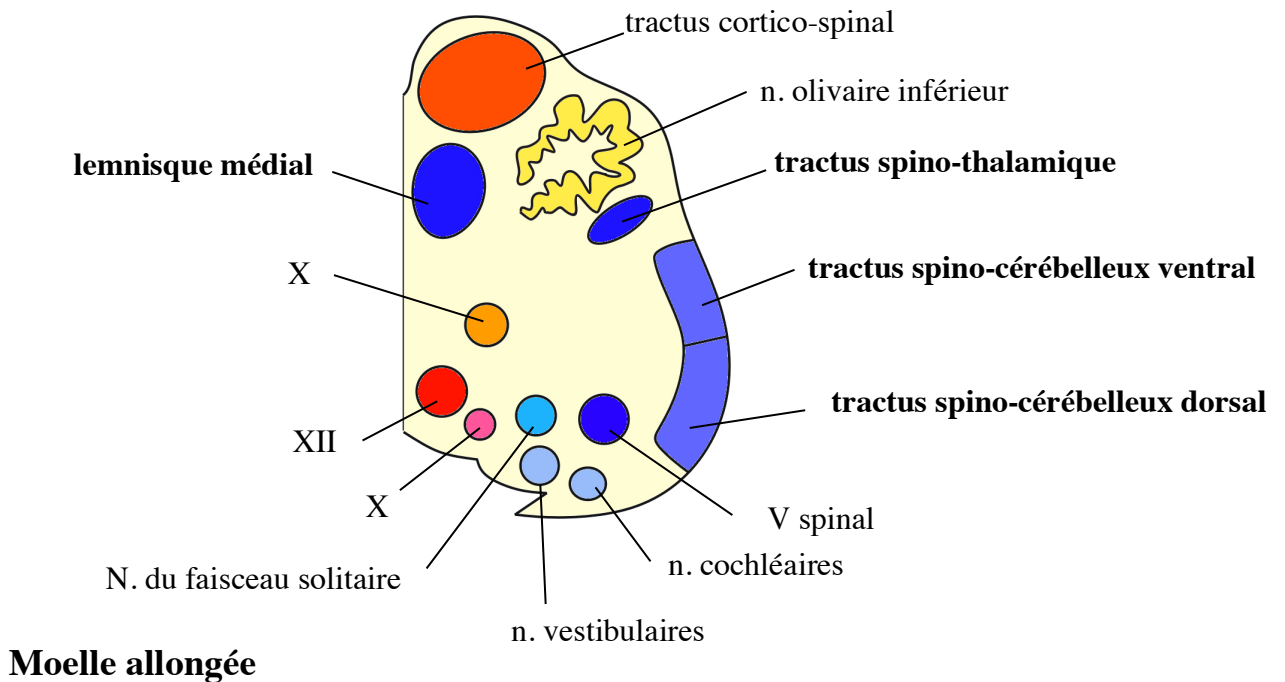
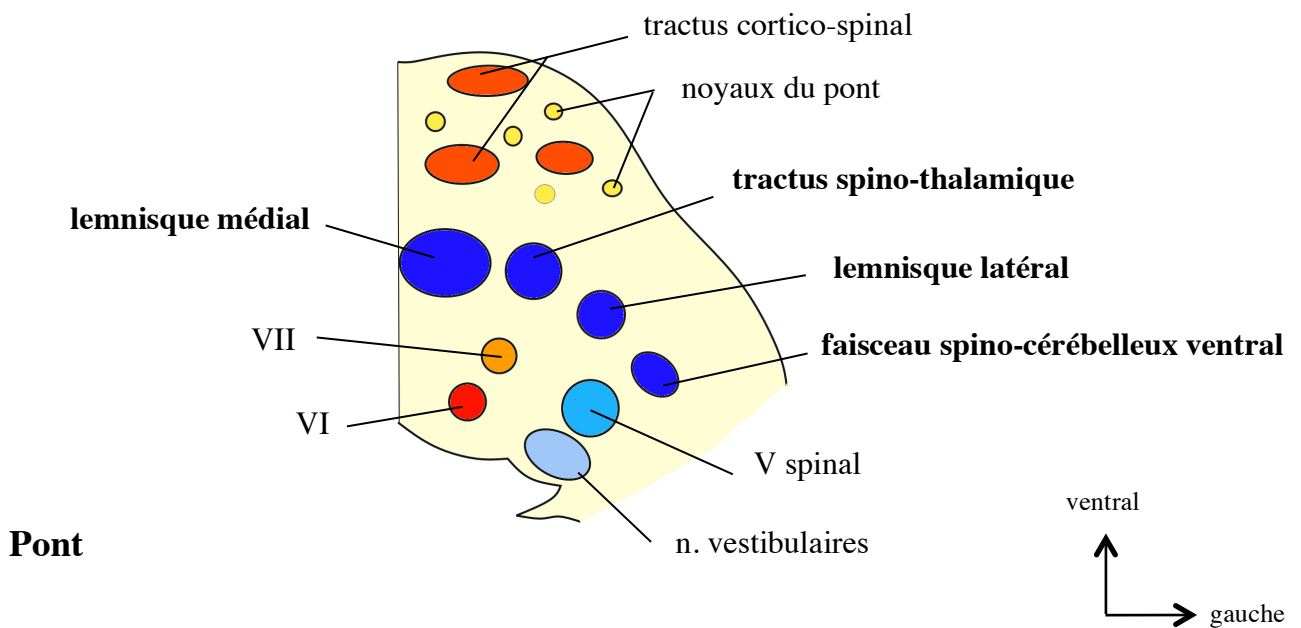
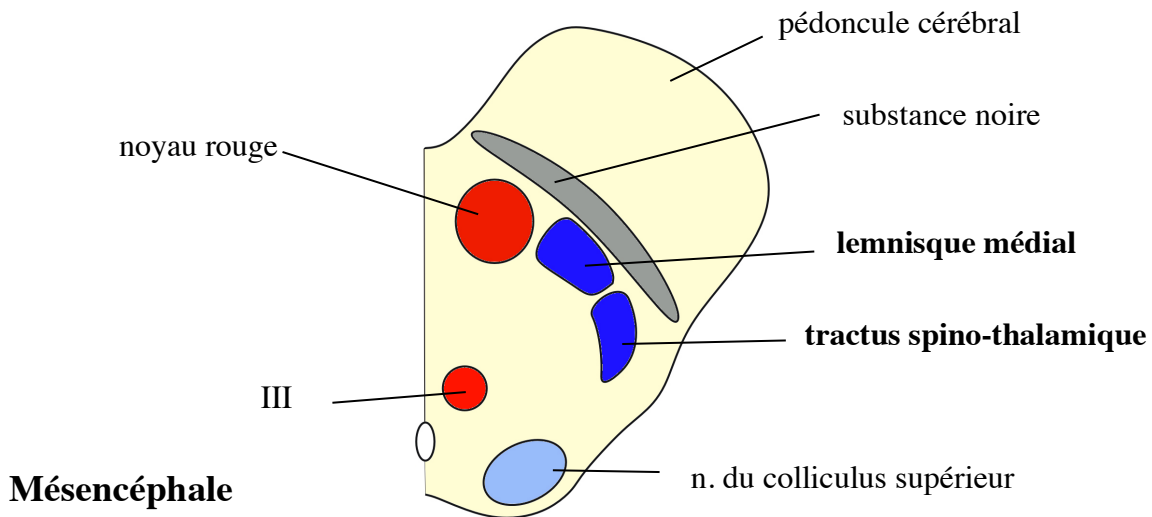
Irido-dilatation



Les voies auditives



Les aires corticales auditives



Voies de la sensibilité sur coupes du tronc cérébral

VOIES DE LA SENSIBILITÉ

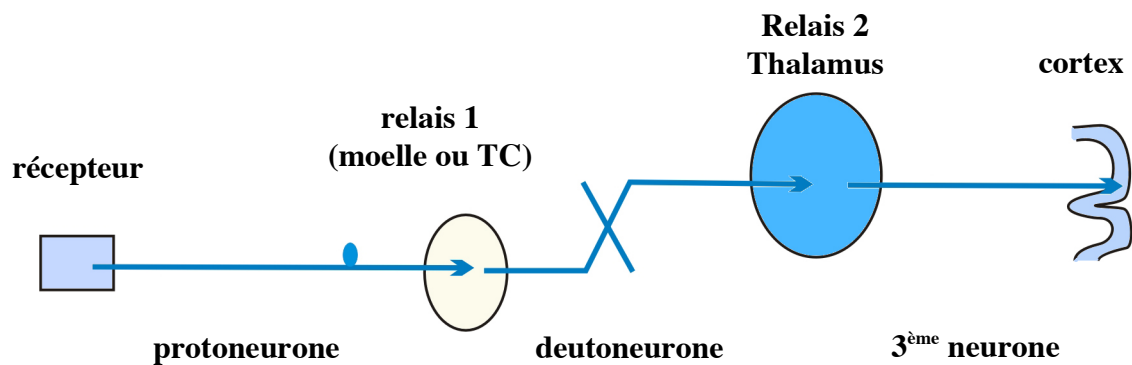
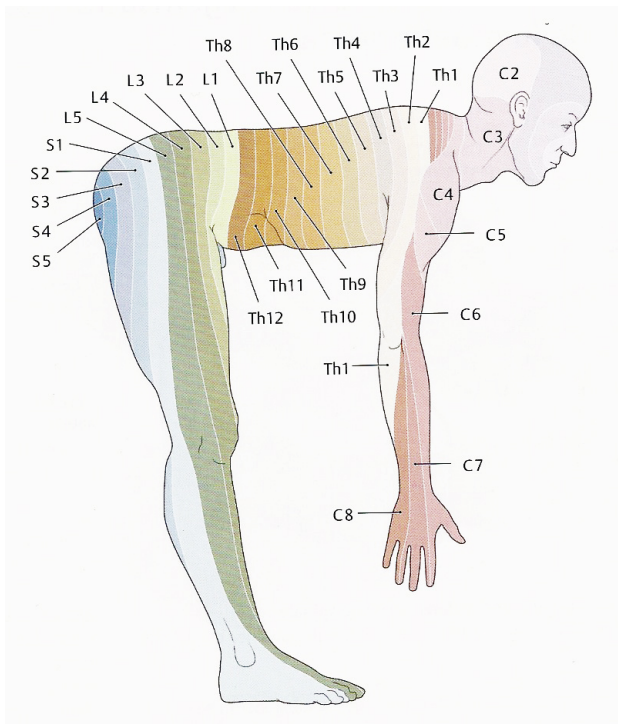
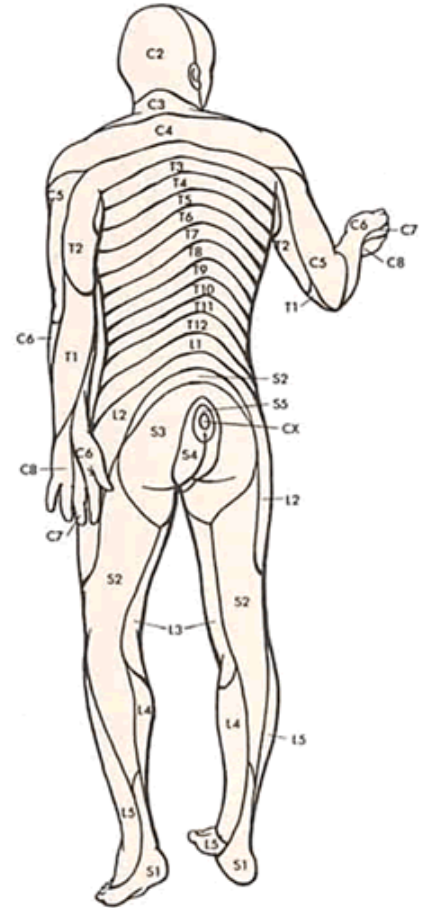
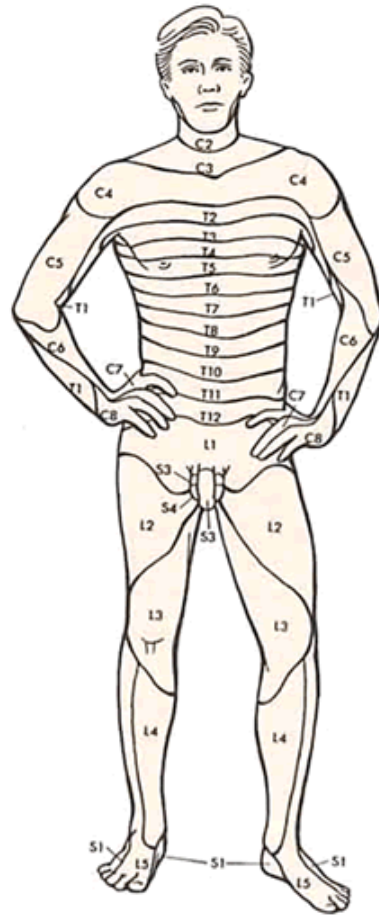
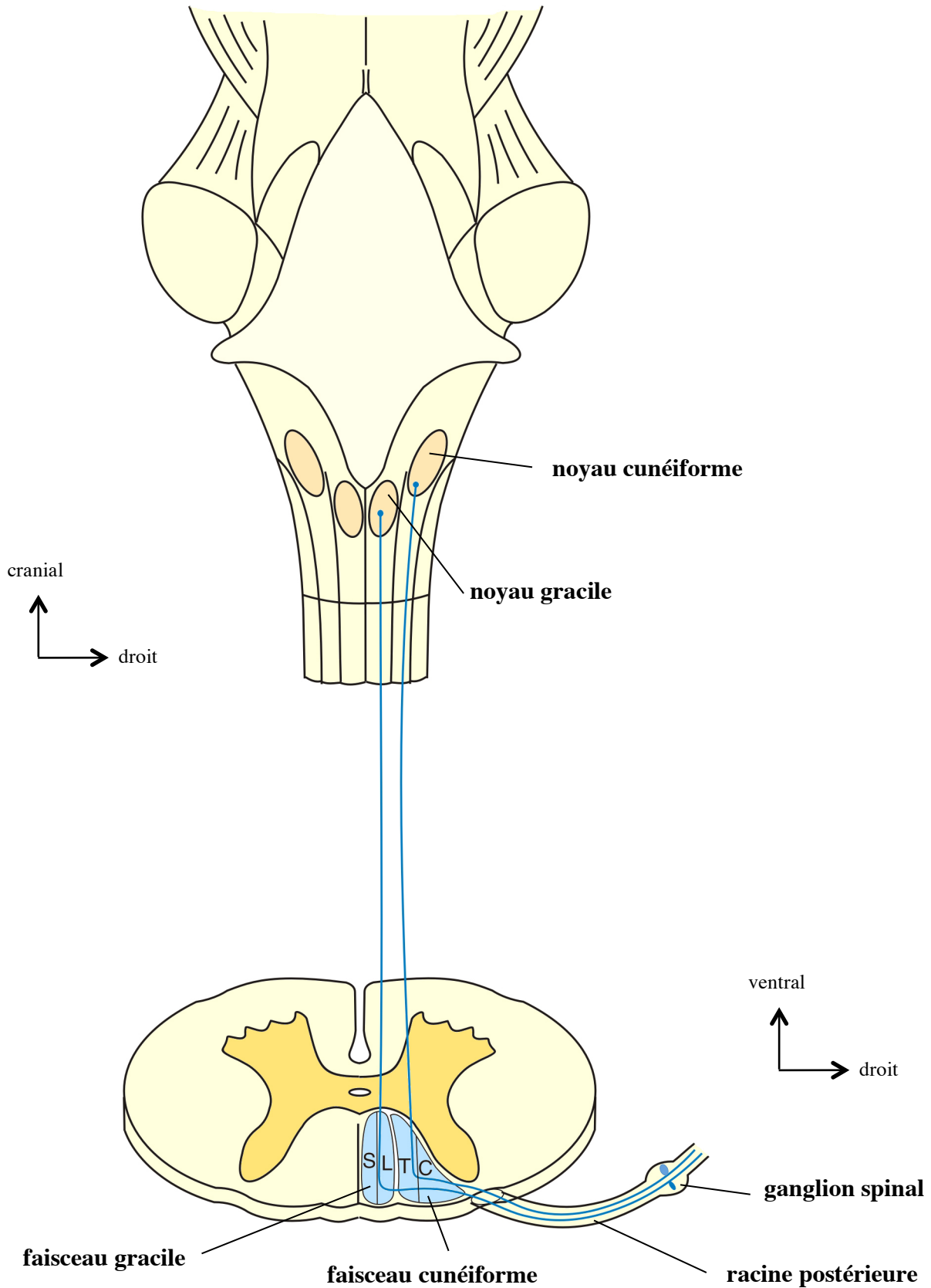


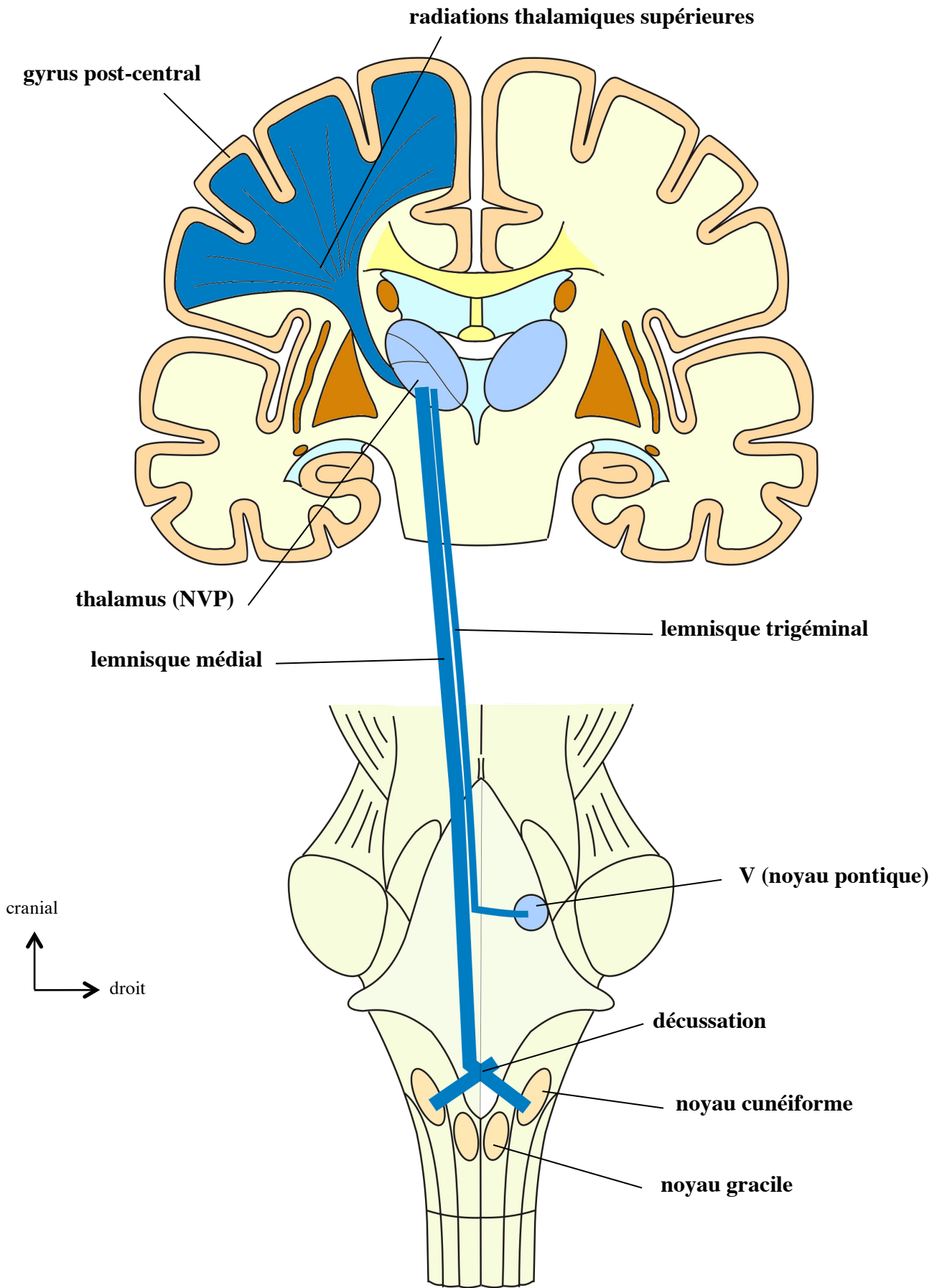
Schéma général des voies de la sensibilité consciente



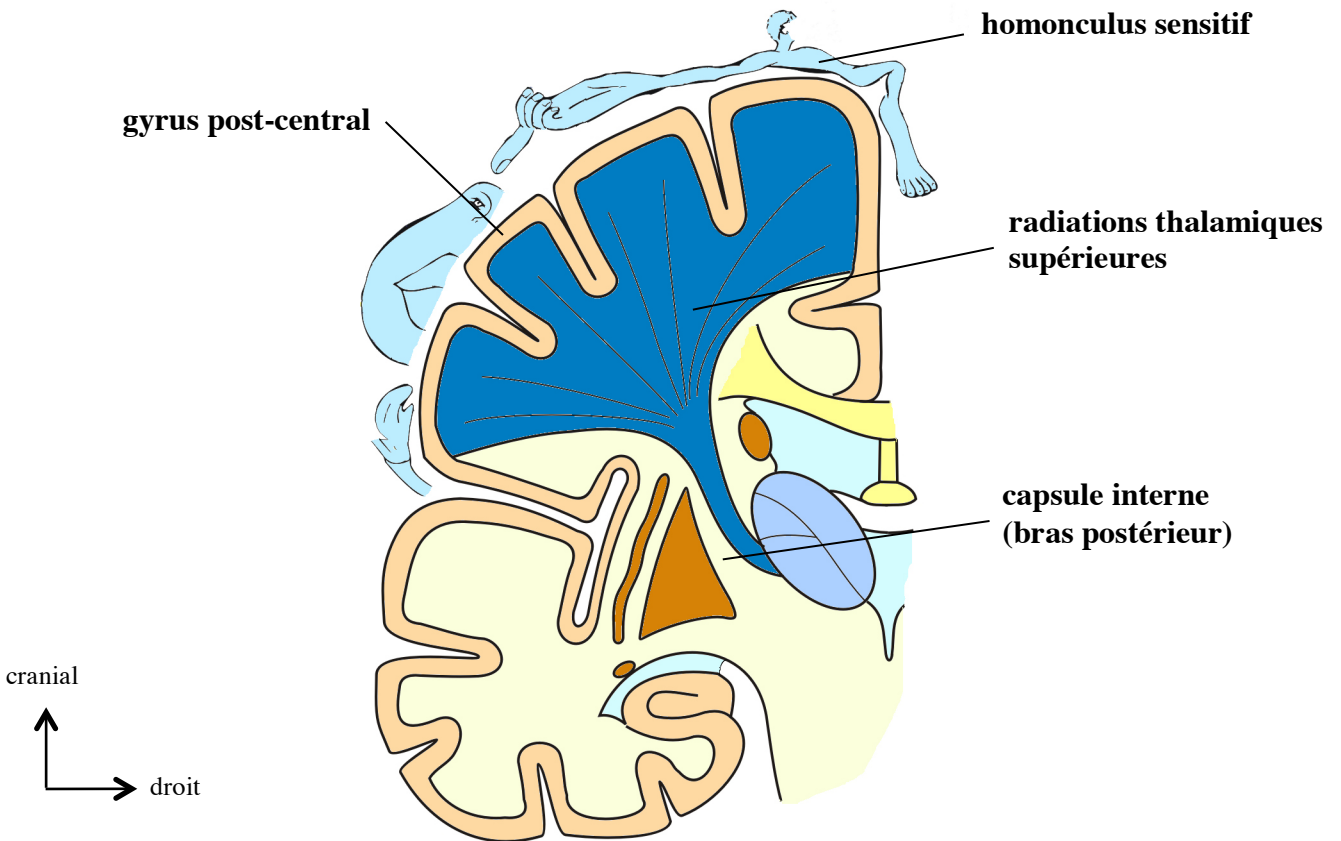
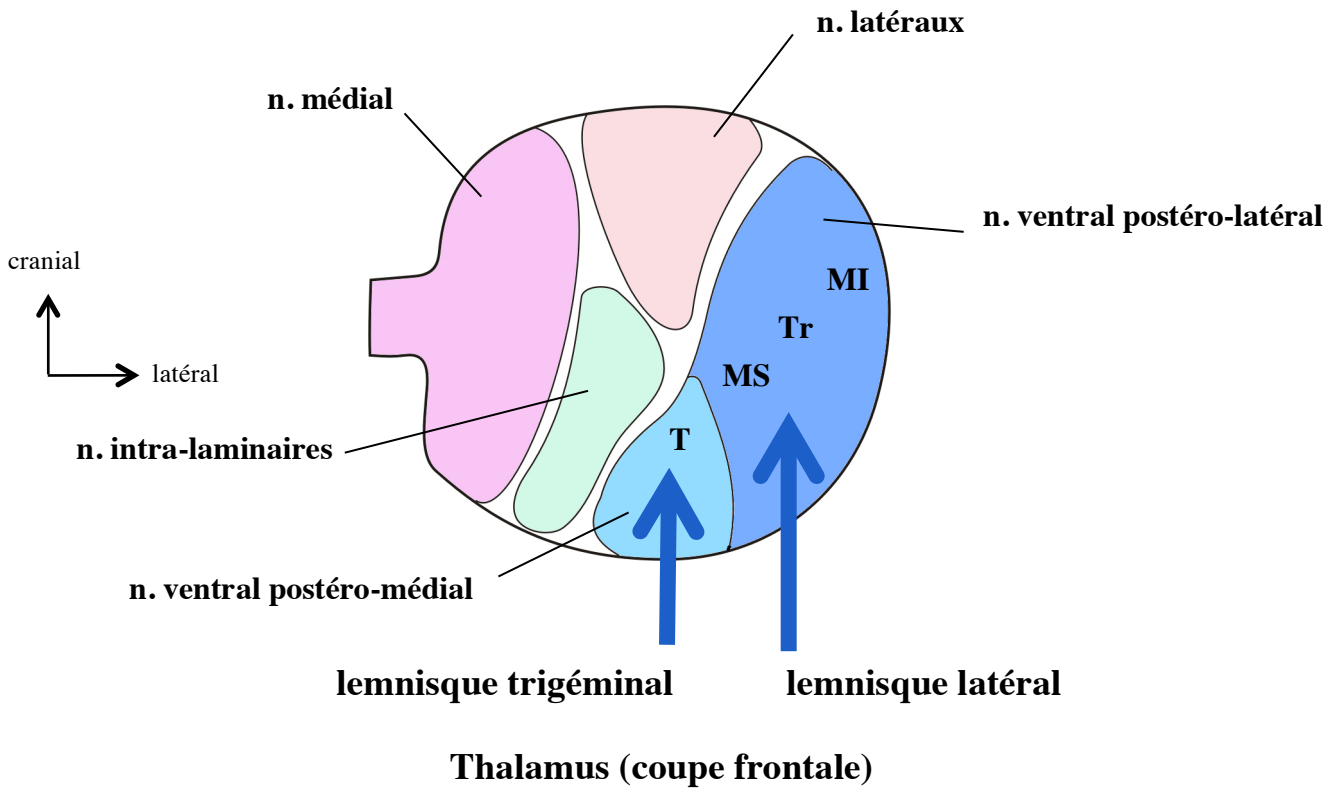
Les dermatomes



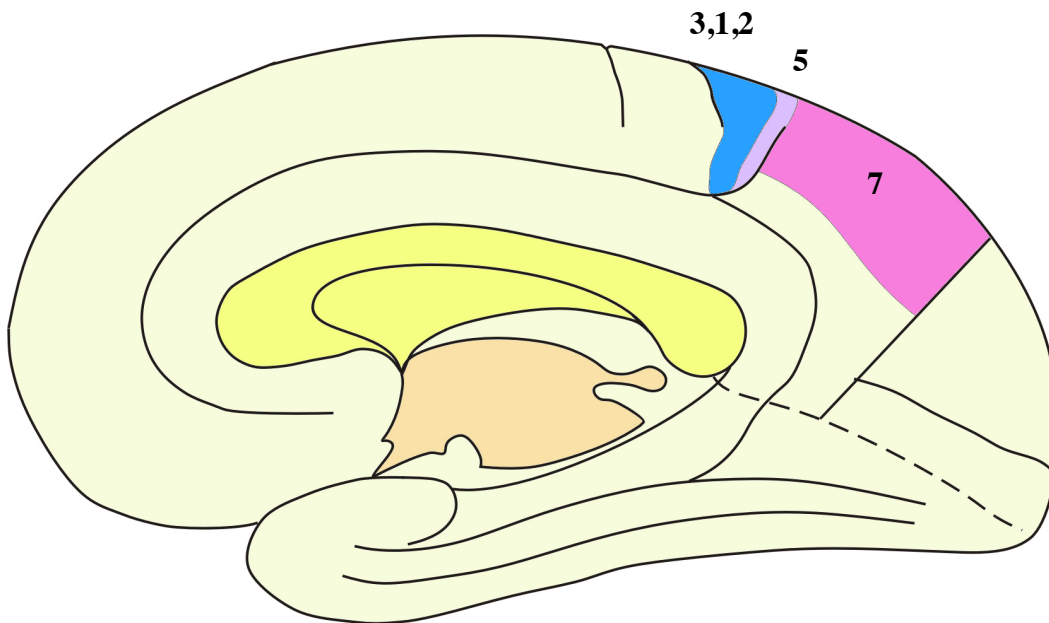
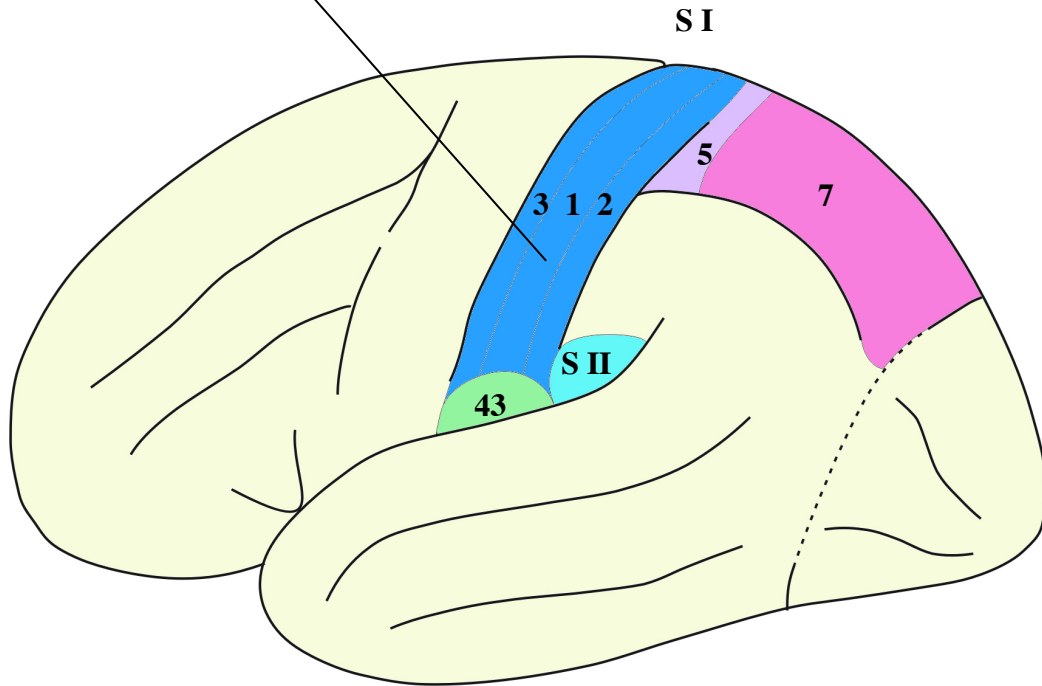
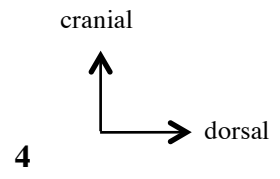
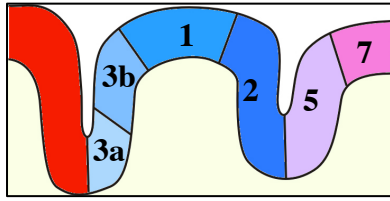
Tact épicrotique et sensibilité proprioceptive consciente (1^{er} neurone)



**Tact épieritique et sensibilité proprioceptive consciente
(2^{ème} et 3^{ème} neurones)**



Les radiations thalamiques et le gyrus post-central



Les aires corticales somesthésiques