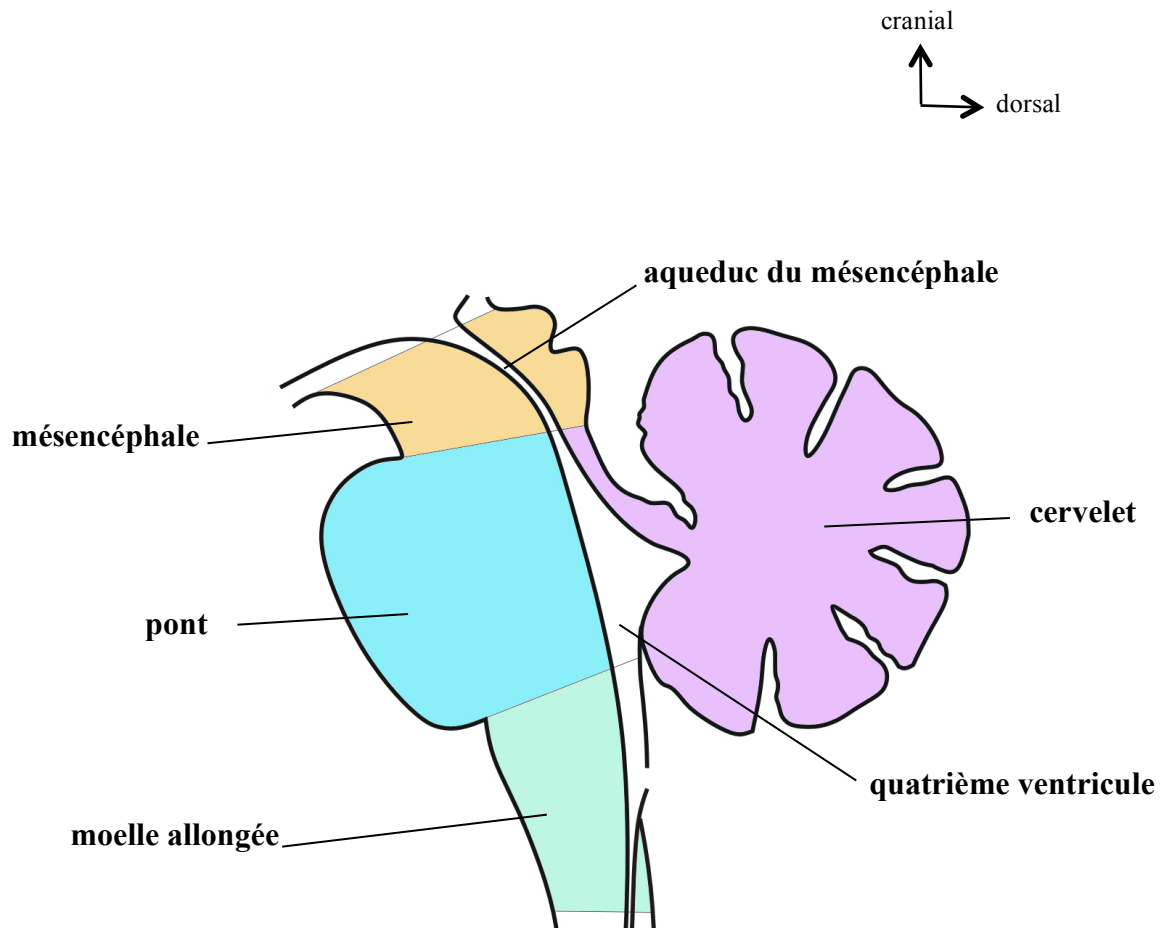
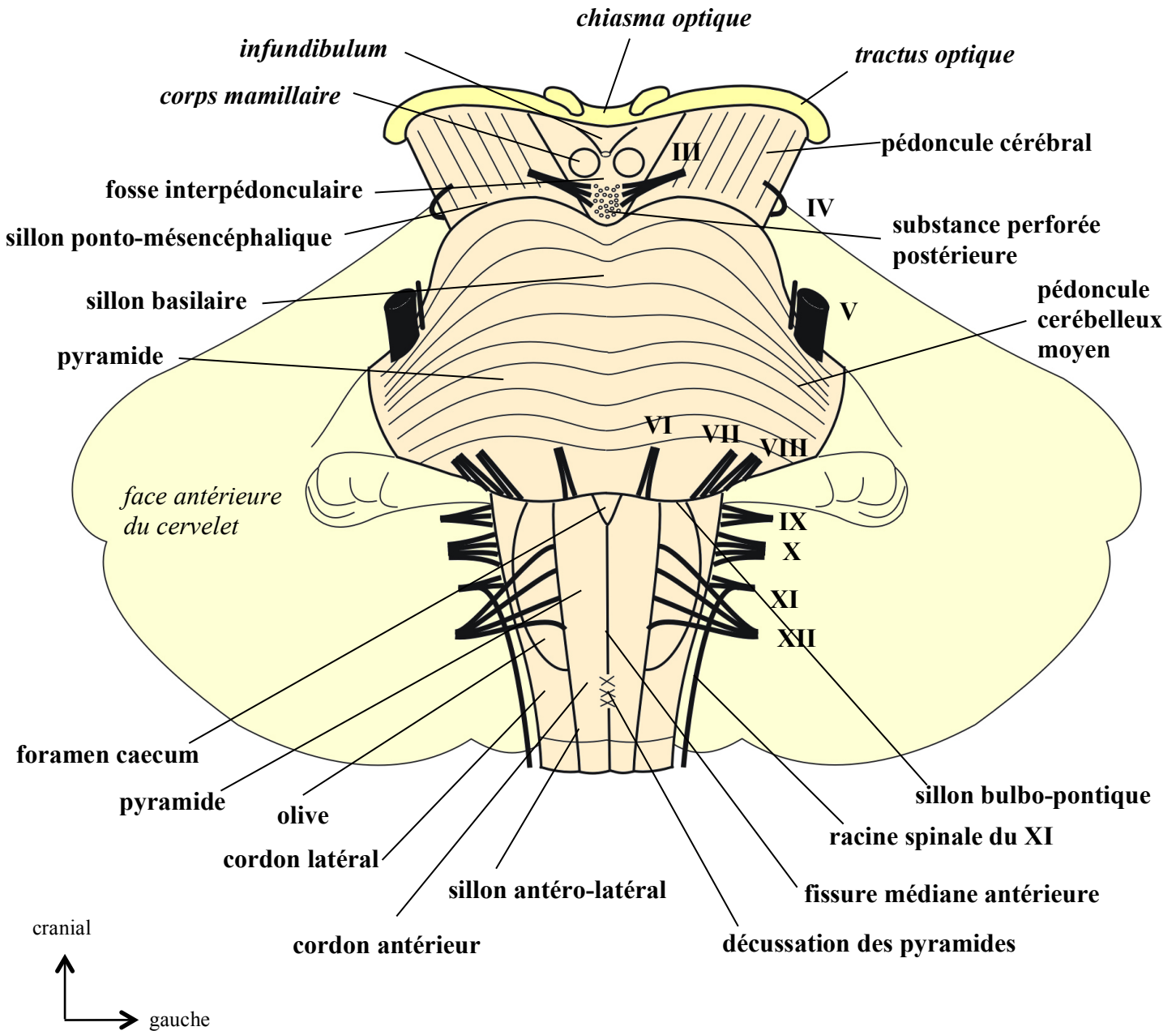


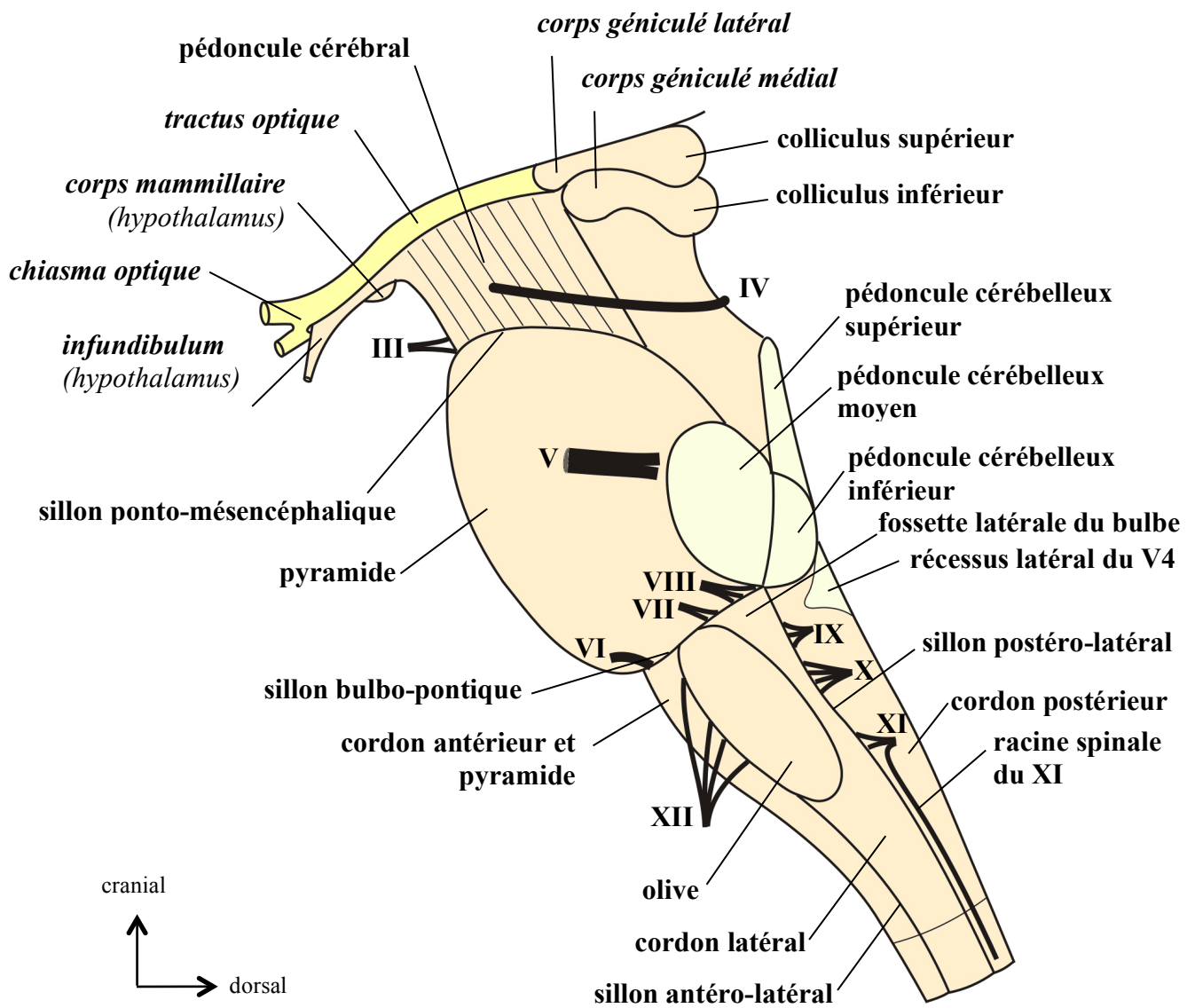
# LE TRONC CEREBRAL ET LE CERVELET



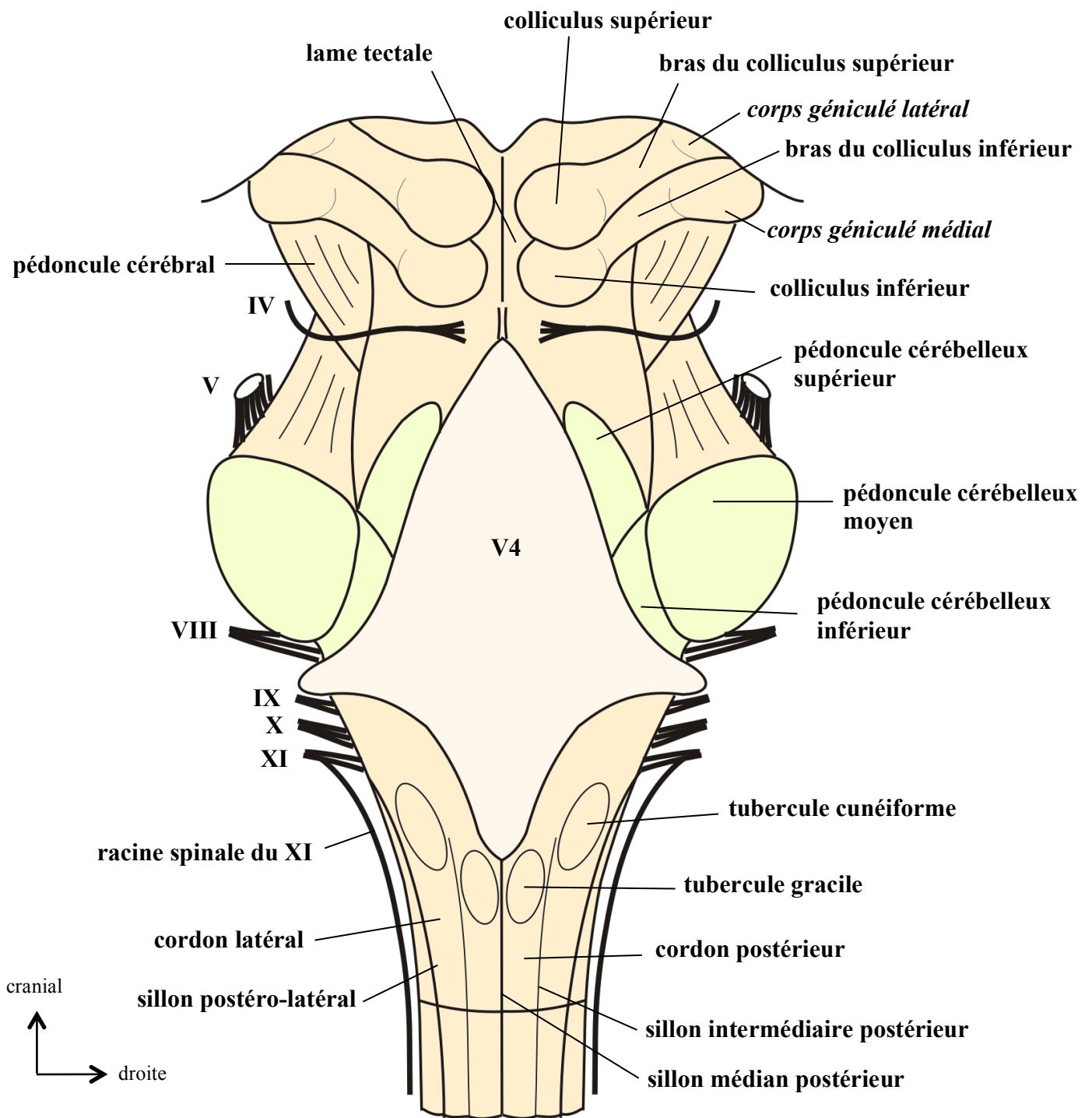


Nerfs crâniens	
III	nerf oculo-moteur
IV	nerf trochléaire
V	nerf trijumeau
VI	nerf abducens
VII	nerf facial
VIII	nerf vestibulo-cochléaire
IX	nerf glosso-pharyngien
X	nerf vague
XI	nerf accessoire
XII	nerf hypoglosse

Vue antérieure du tronc cérébral

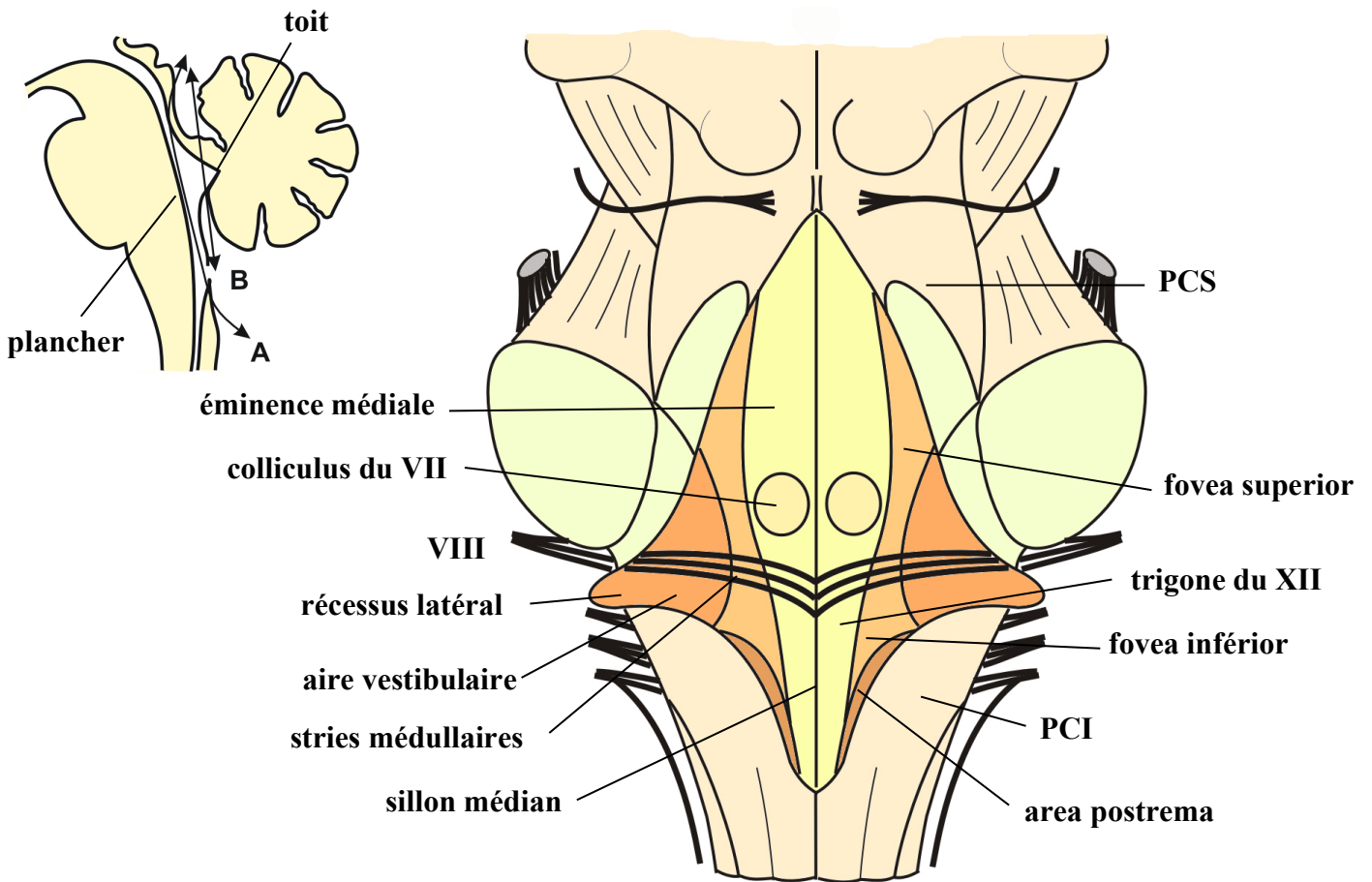


**Vue latérale gauche du tronc cérébral, après section des pédoncules cérébelleux et ablation du cervelet**

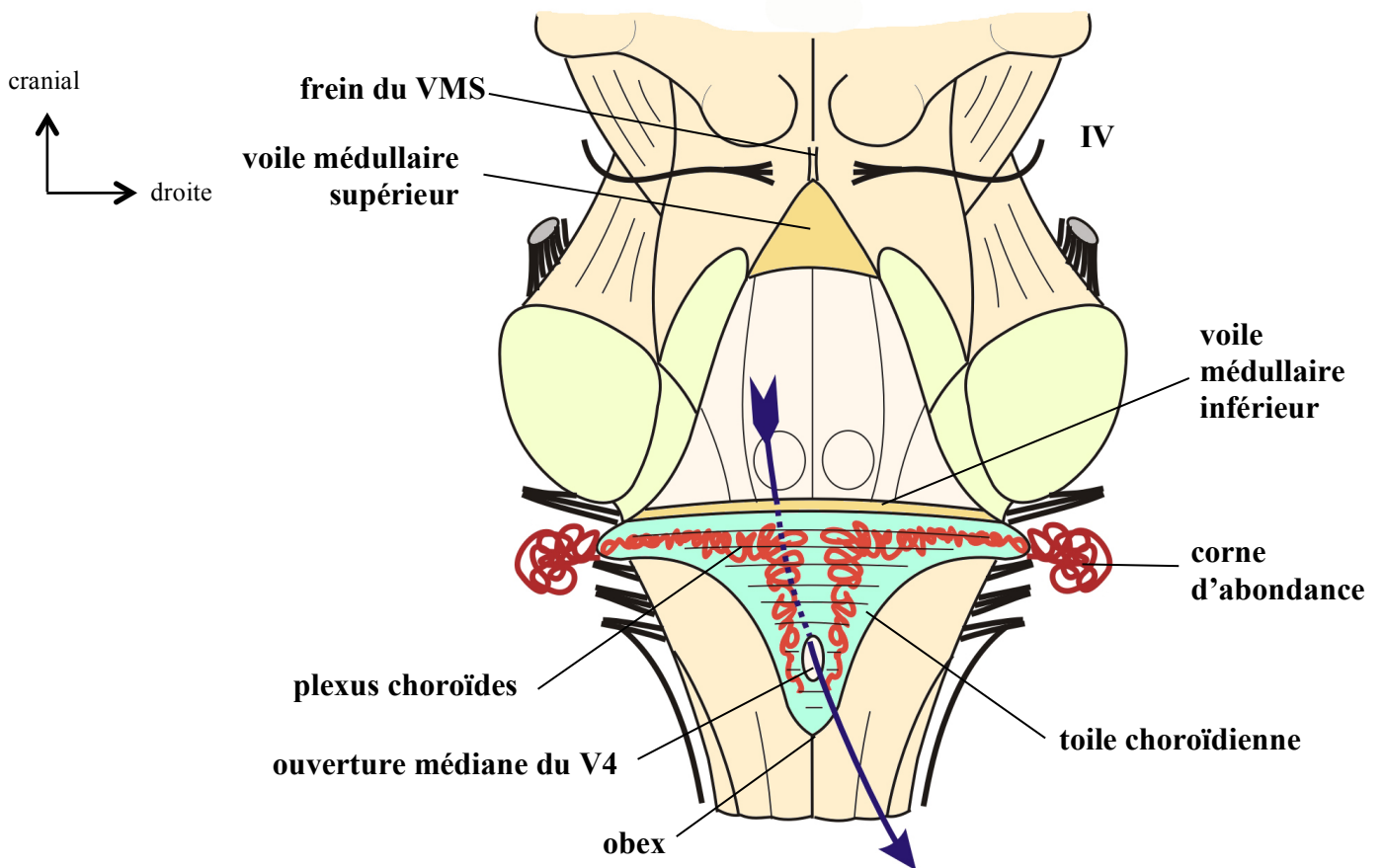


**Vue postérieure du tronc cérébral après section des pédoncules cérébelleux et ablation du cervelet**

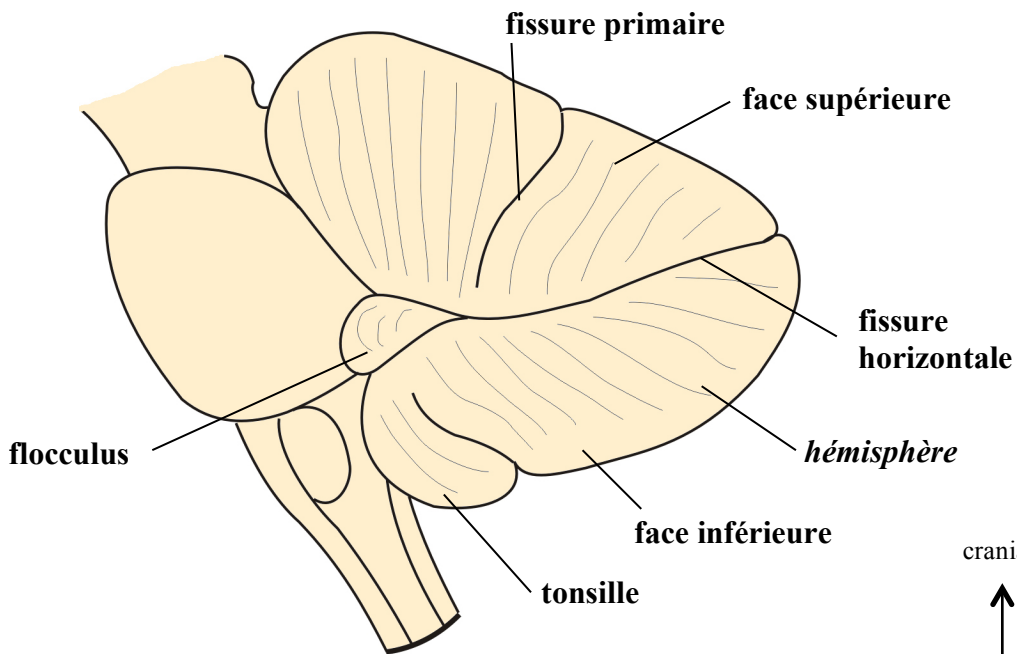




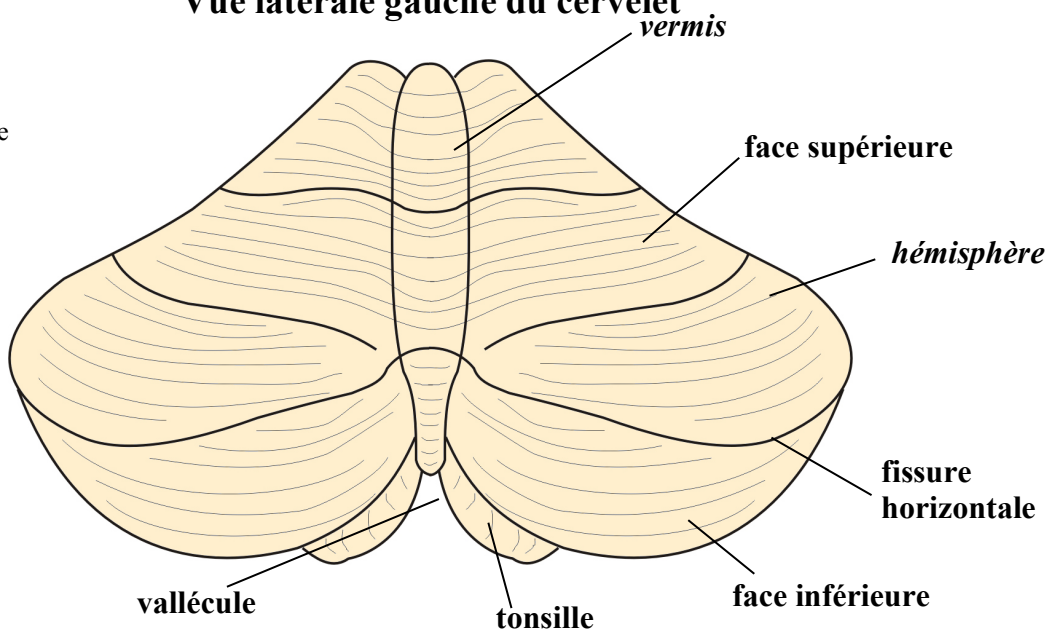
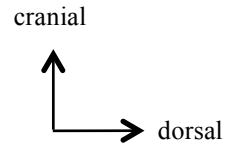
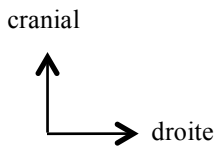
**Plancher du quatrième ventricule (fosse rhomboïde) après ablation du cervelet et du toit (A)**



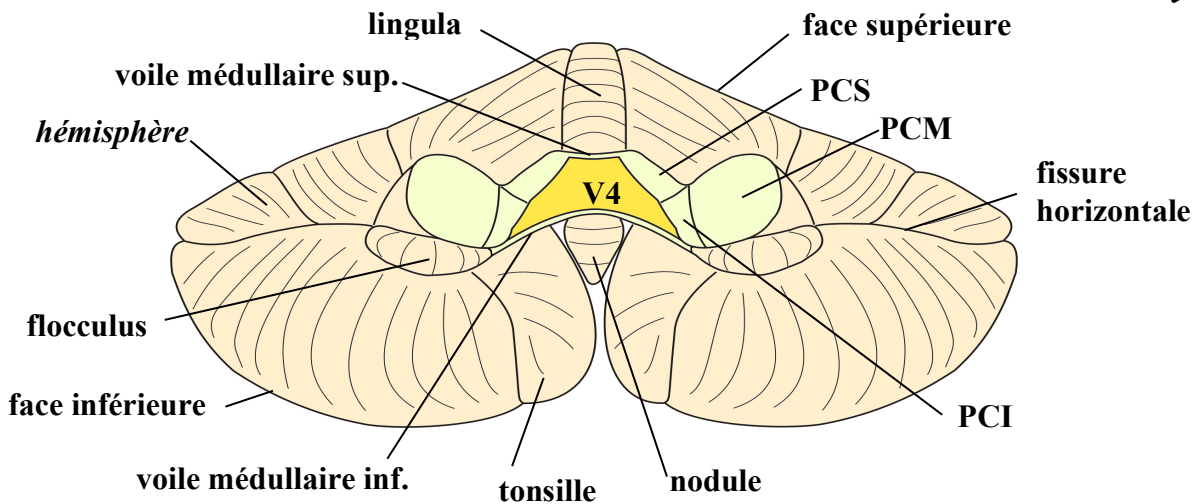
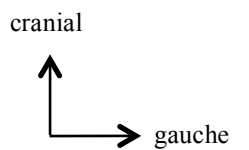
**Toit du quatrième ventricule après ablation du cervelet (B)**



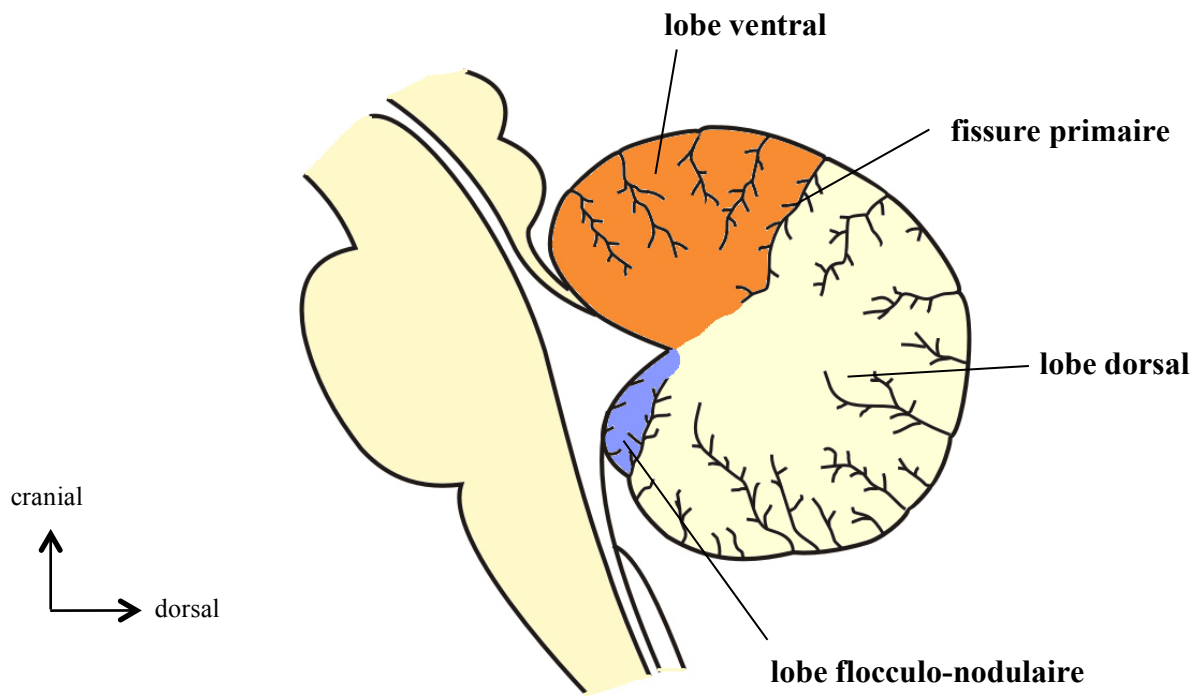
**Vue latérale gauche du cervelet**



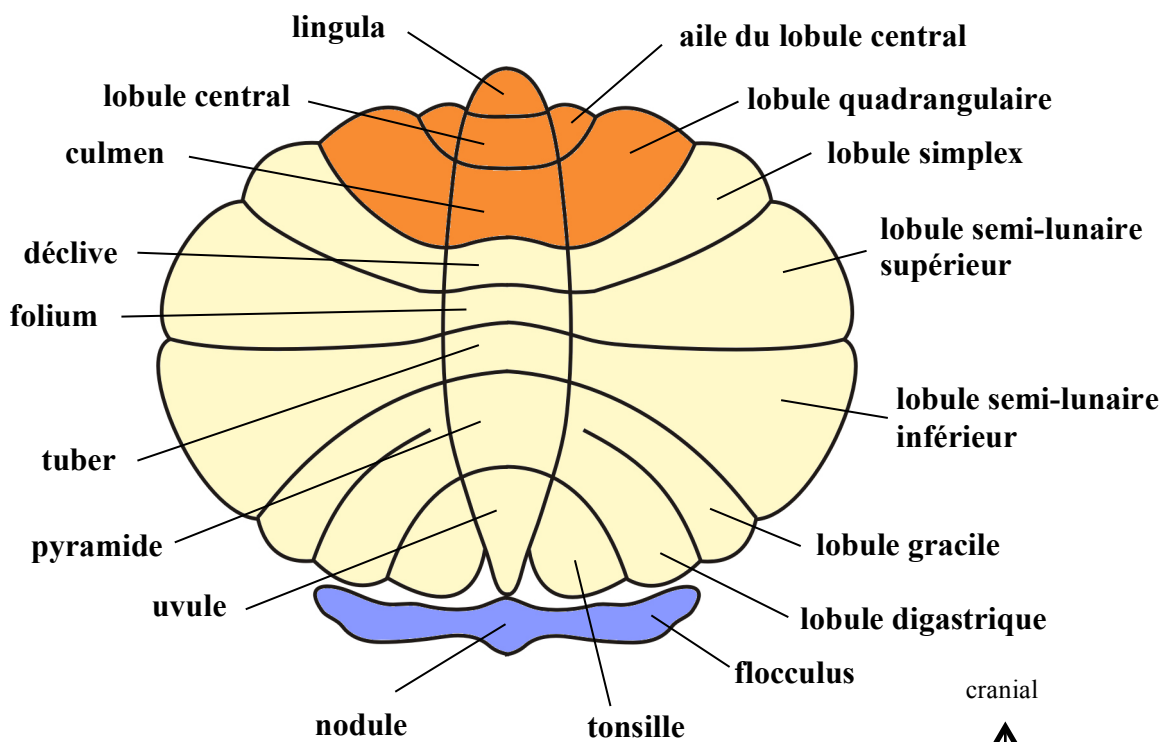
**vue postérieure du cervelet**



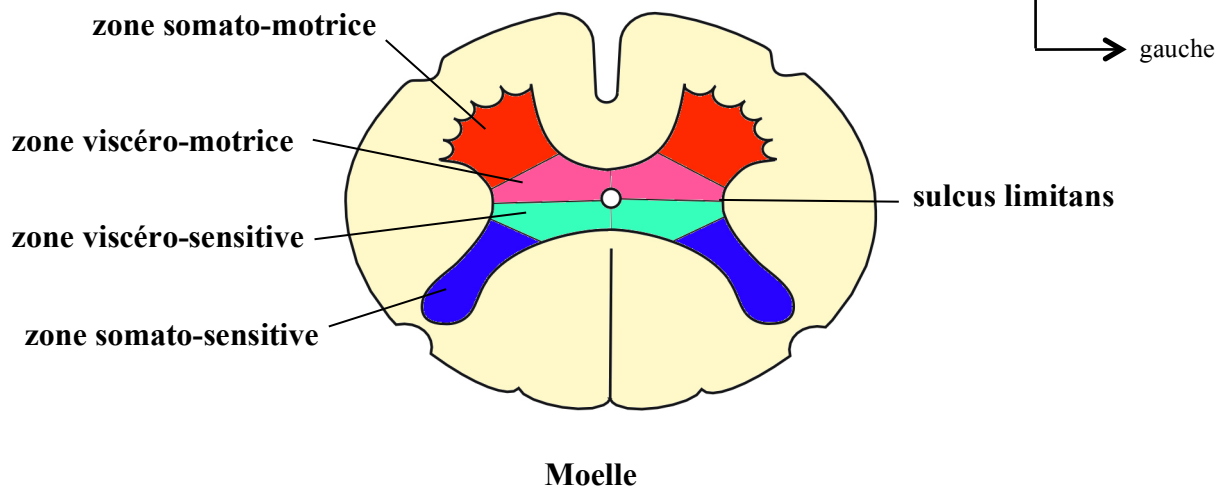
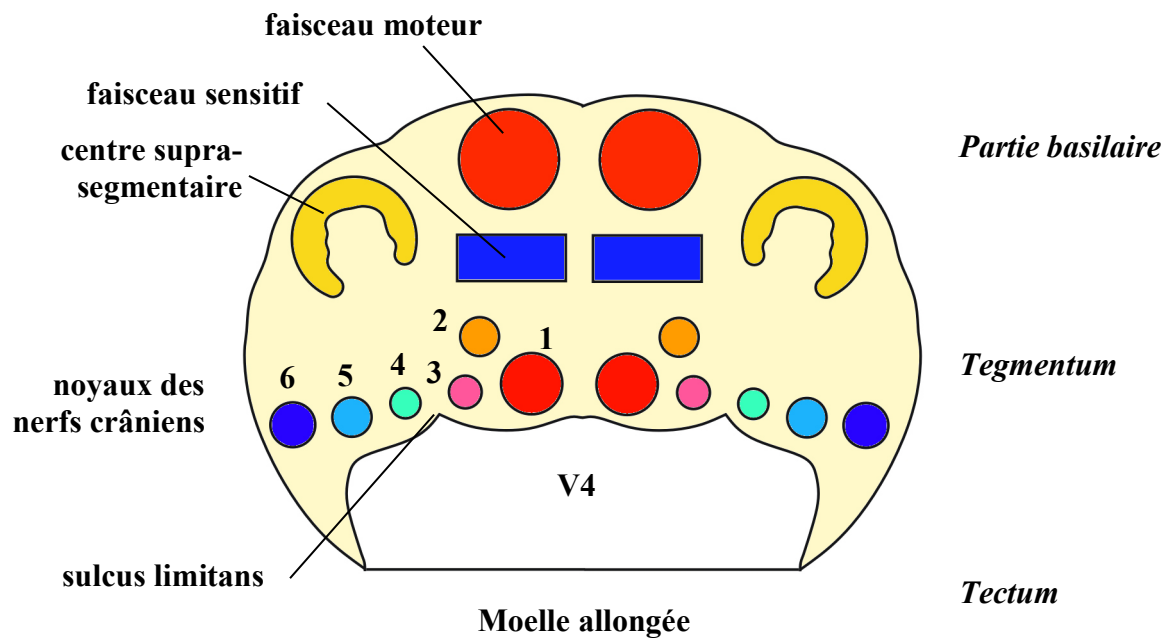
**Vue antérieure du cervelet après ablation du tronc cérébral**



**Les lobes du cervelet (coupe sagittale médiane)**

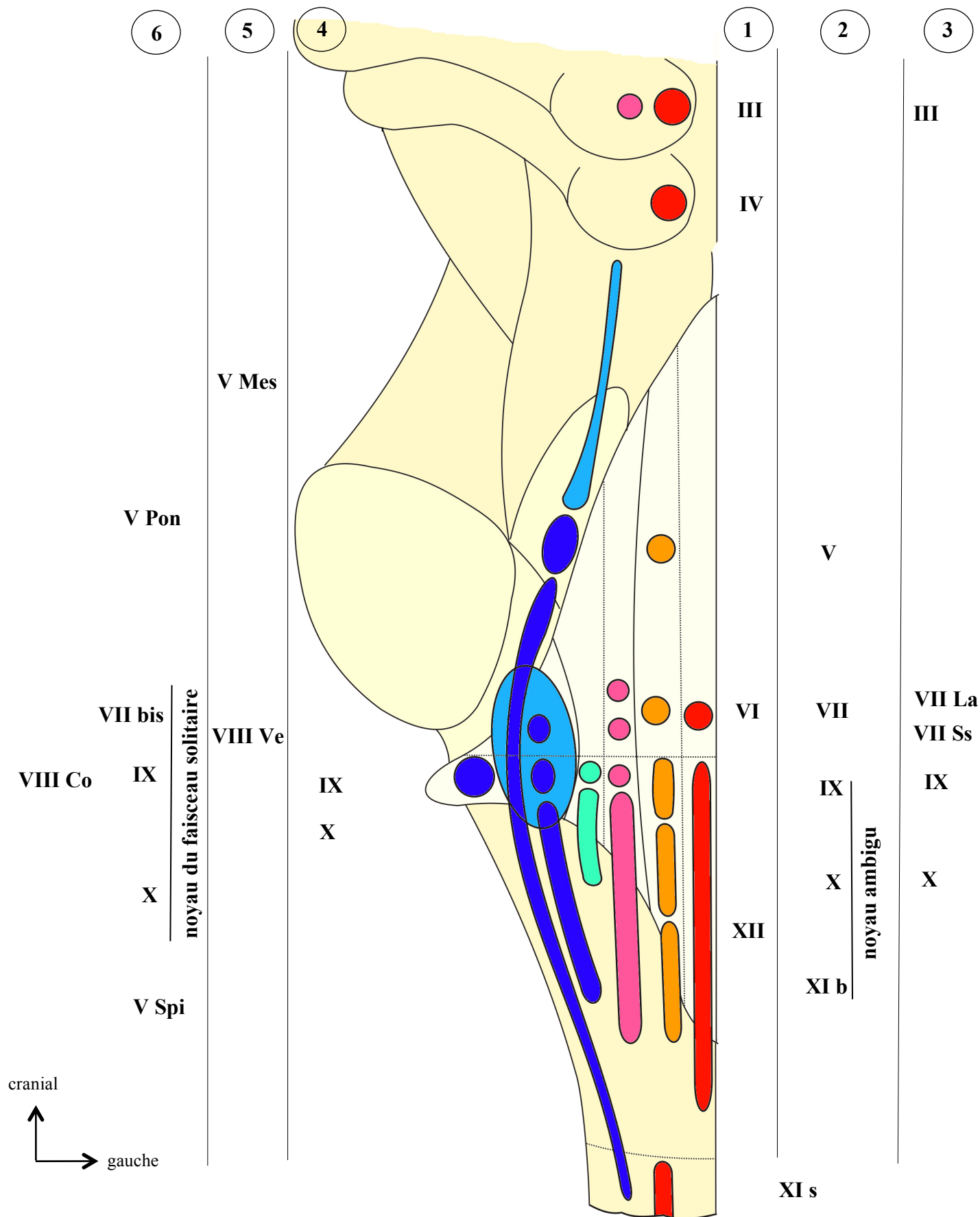


**Les lobules du cervelet (cervelet étalé)**

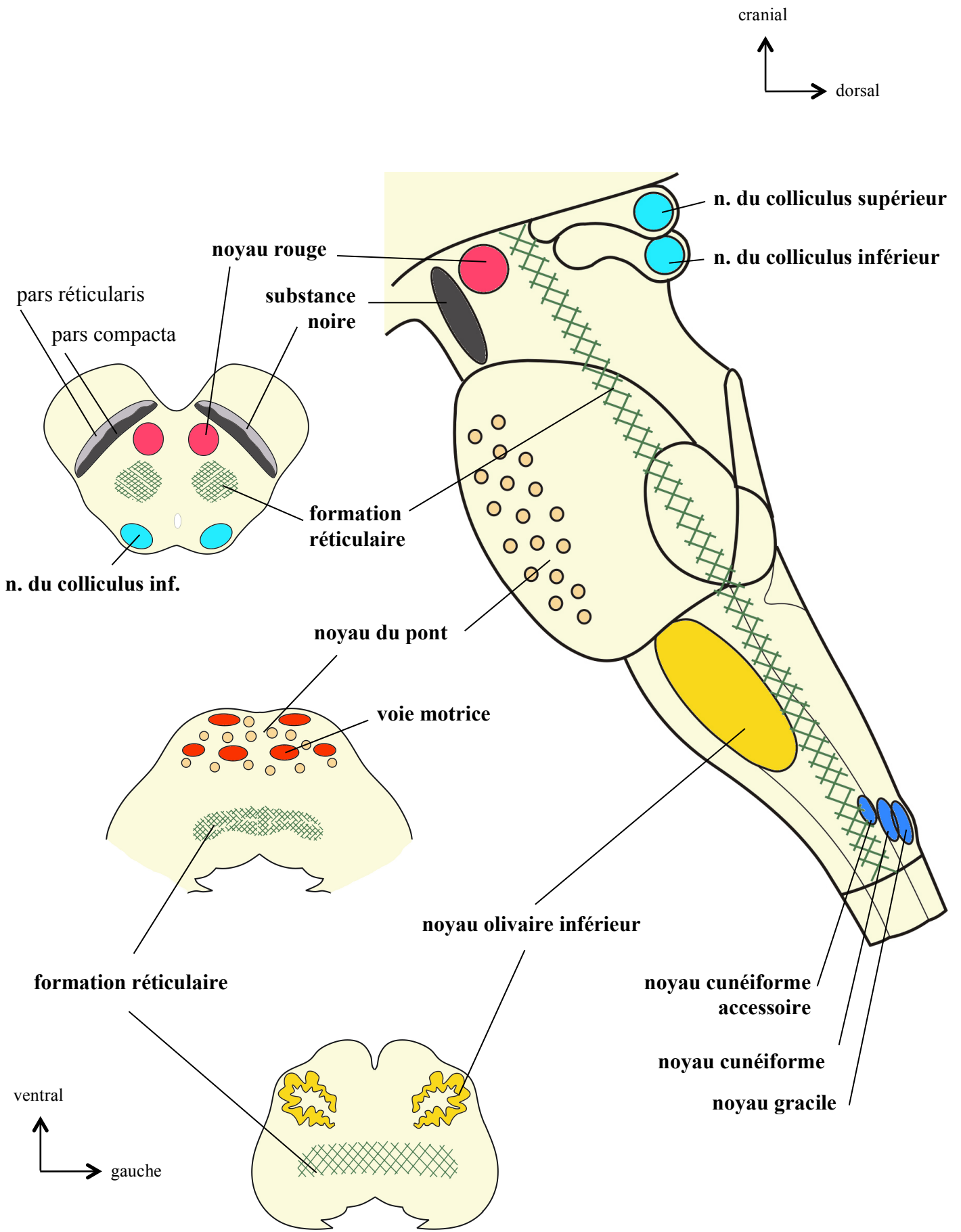


- 1 : colonne somato-motrice somitique*
- 2 : colonne somato-motrice branchiale*
- 3 : colonne viscéro-motrice*
- 4 : colonne viscéro-sensitive*
- 5 : colonne de la sensibilité proprioceptive*
- 6 : colonne de la sensibilité extéroceptive*

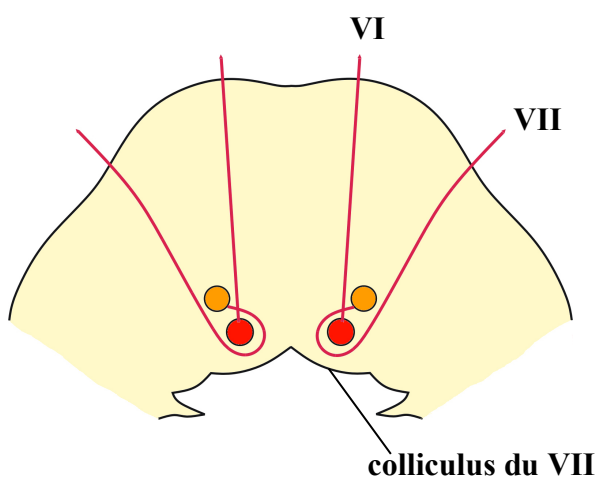
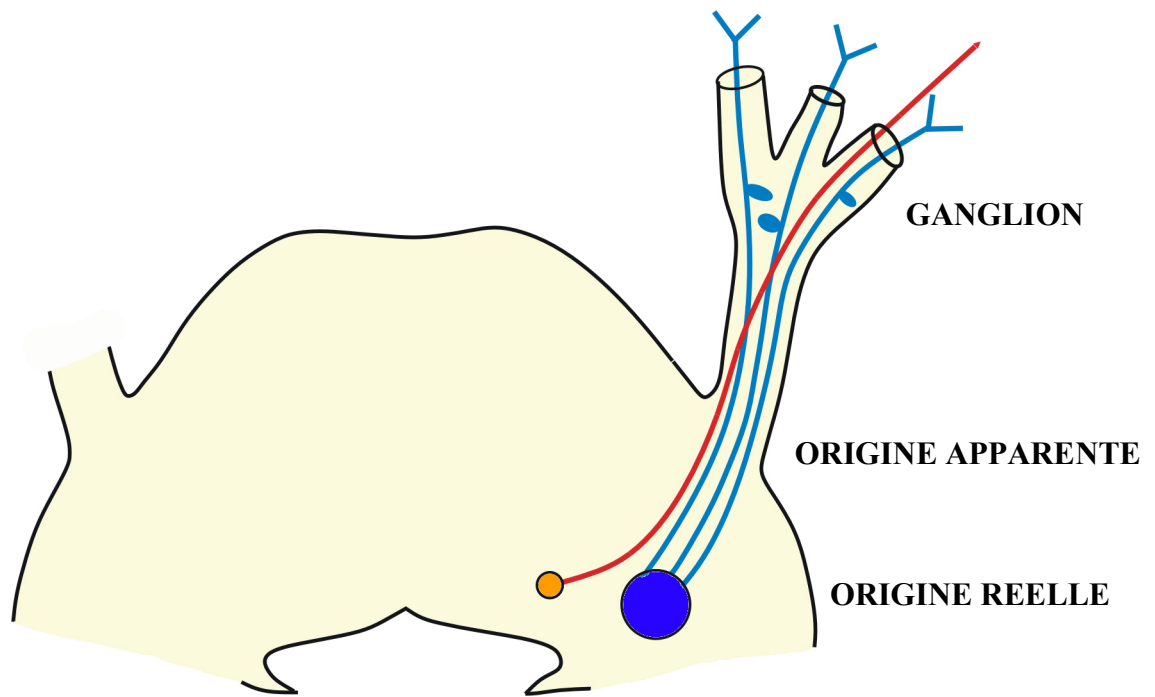
### Représentation schématique des modifications de structure entre la moelle et le tronc cérébral



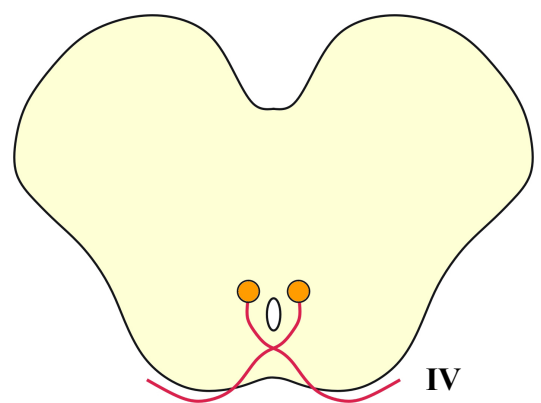
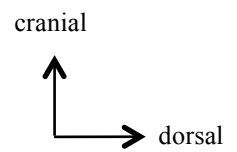
Noyaux des nerfs crâniens



**Les formations grises propres au tronc cérébral**



**Les neurones du VII contournent le noyau du VI**

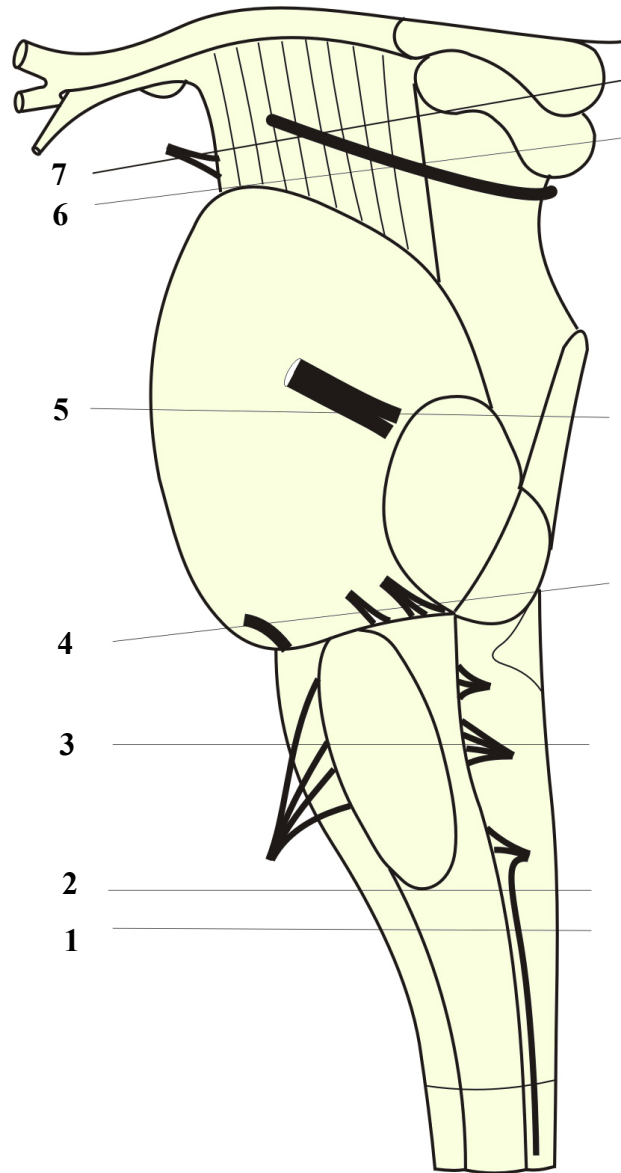


**Les neurones du IV croisent la ligne médiane**

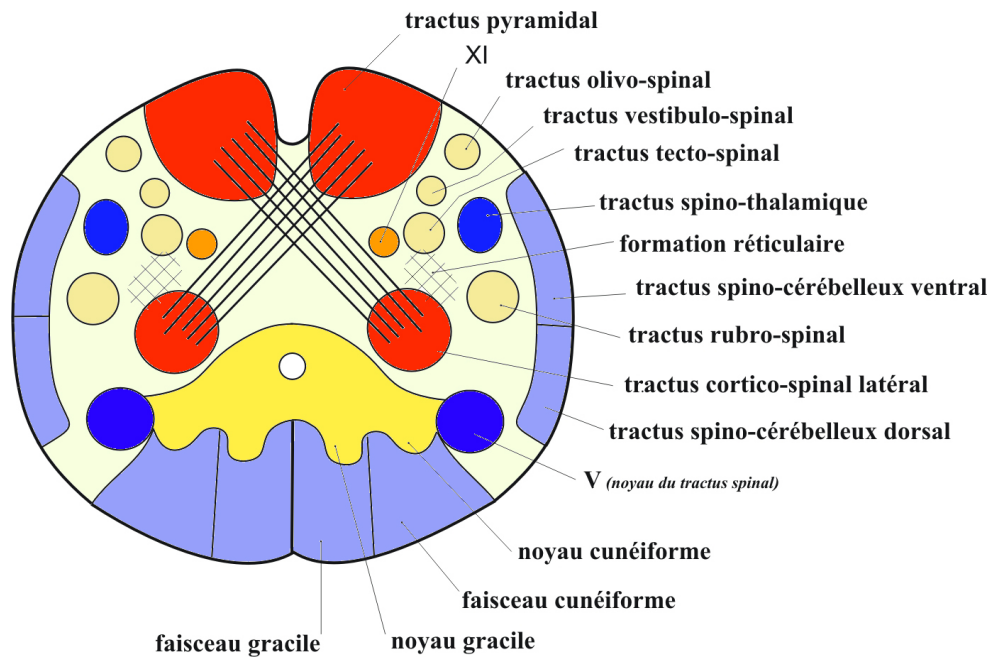
**Les neurones radiculaires des nerfs craniens**



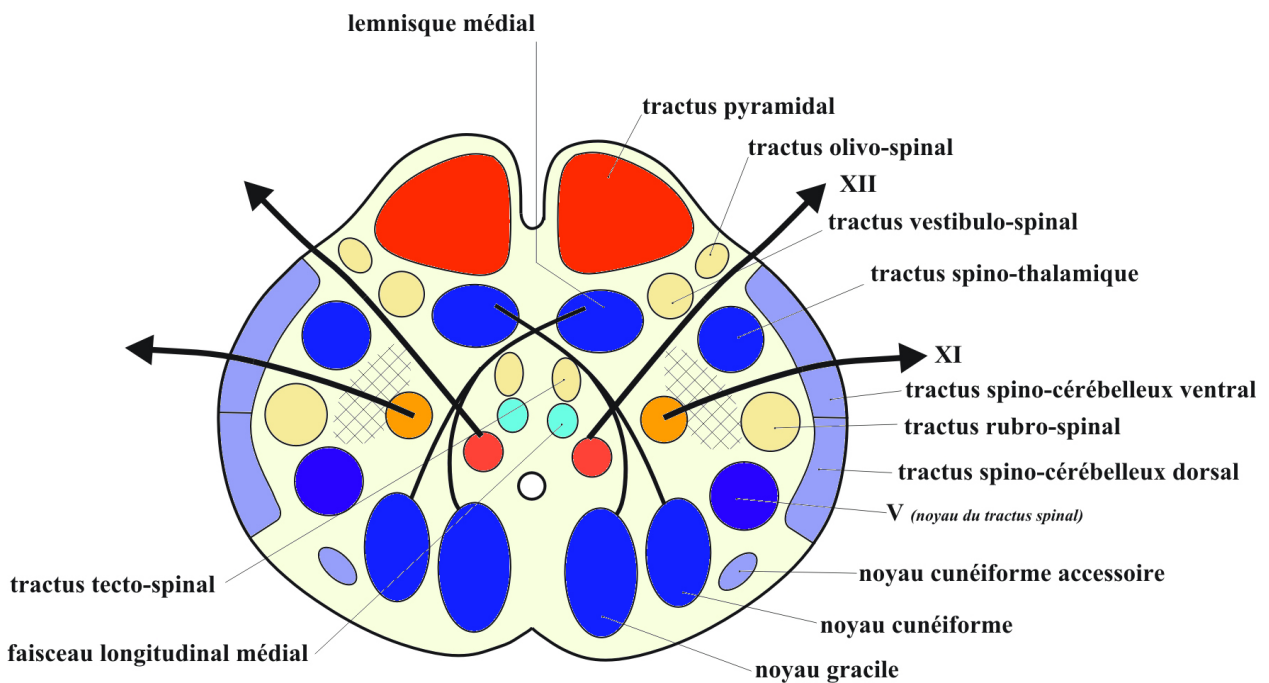
## Coupes schématiques du tronc cérébral



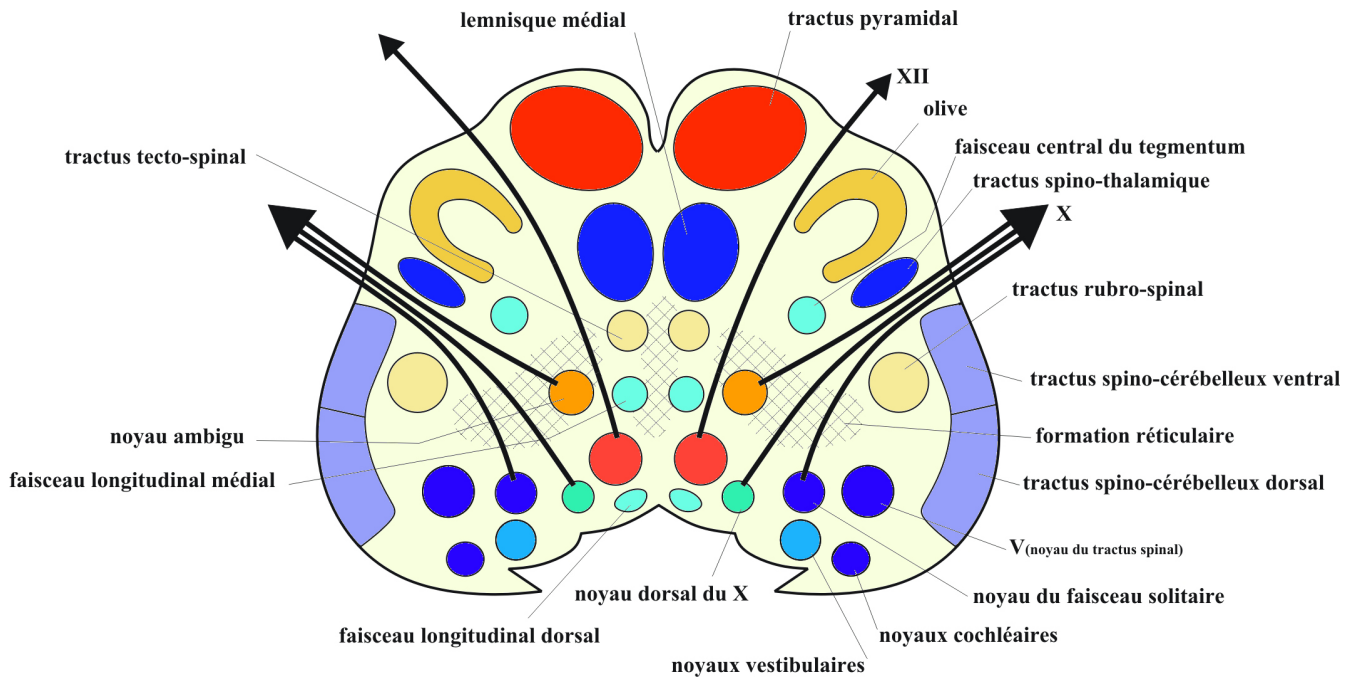




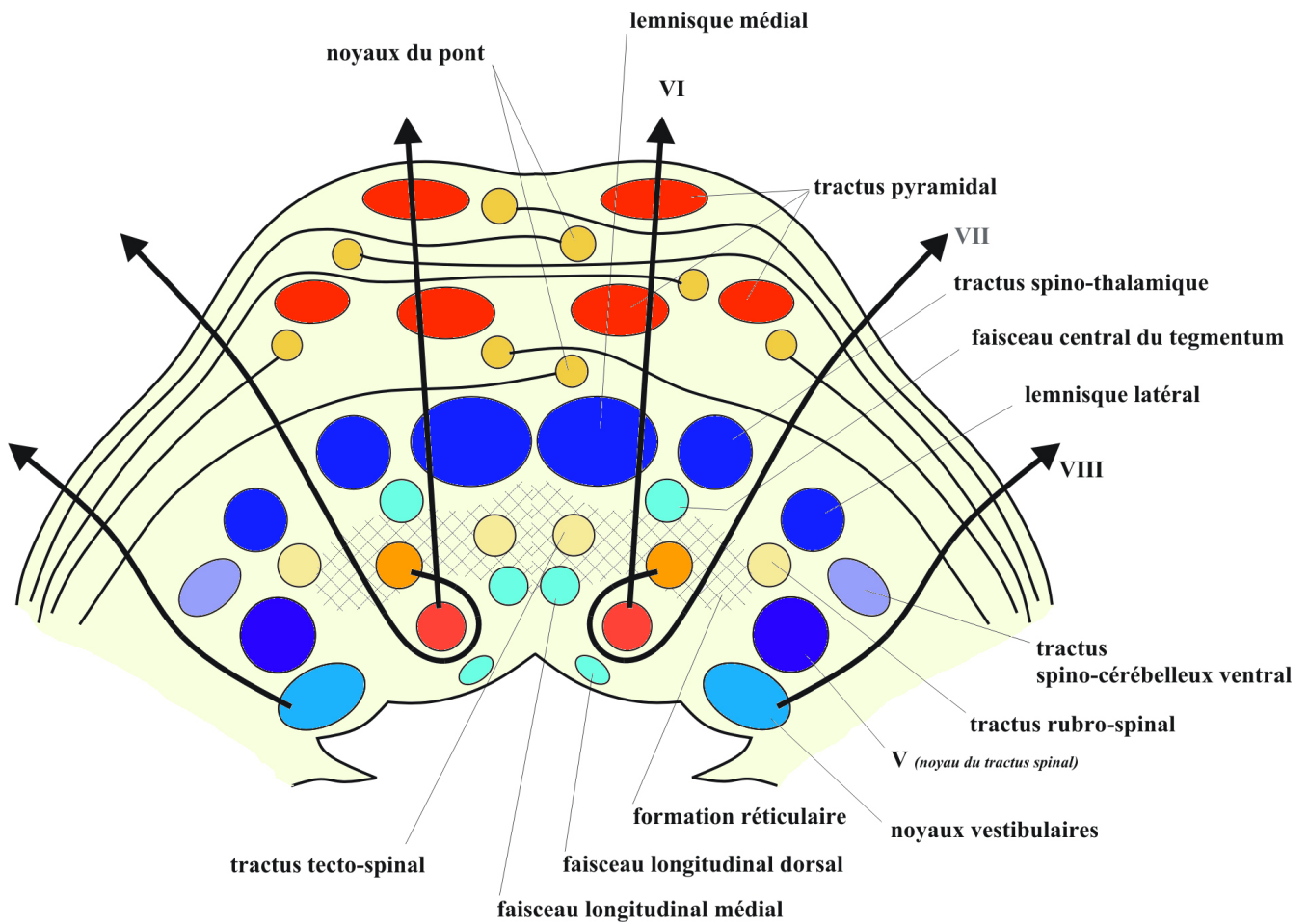
**Coupe 1 passant par la décussation motrice**



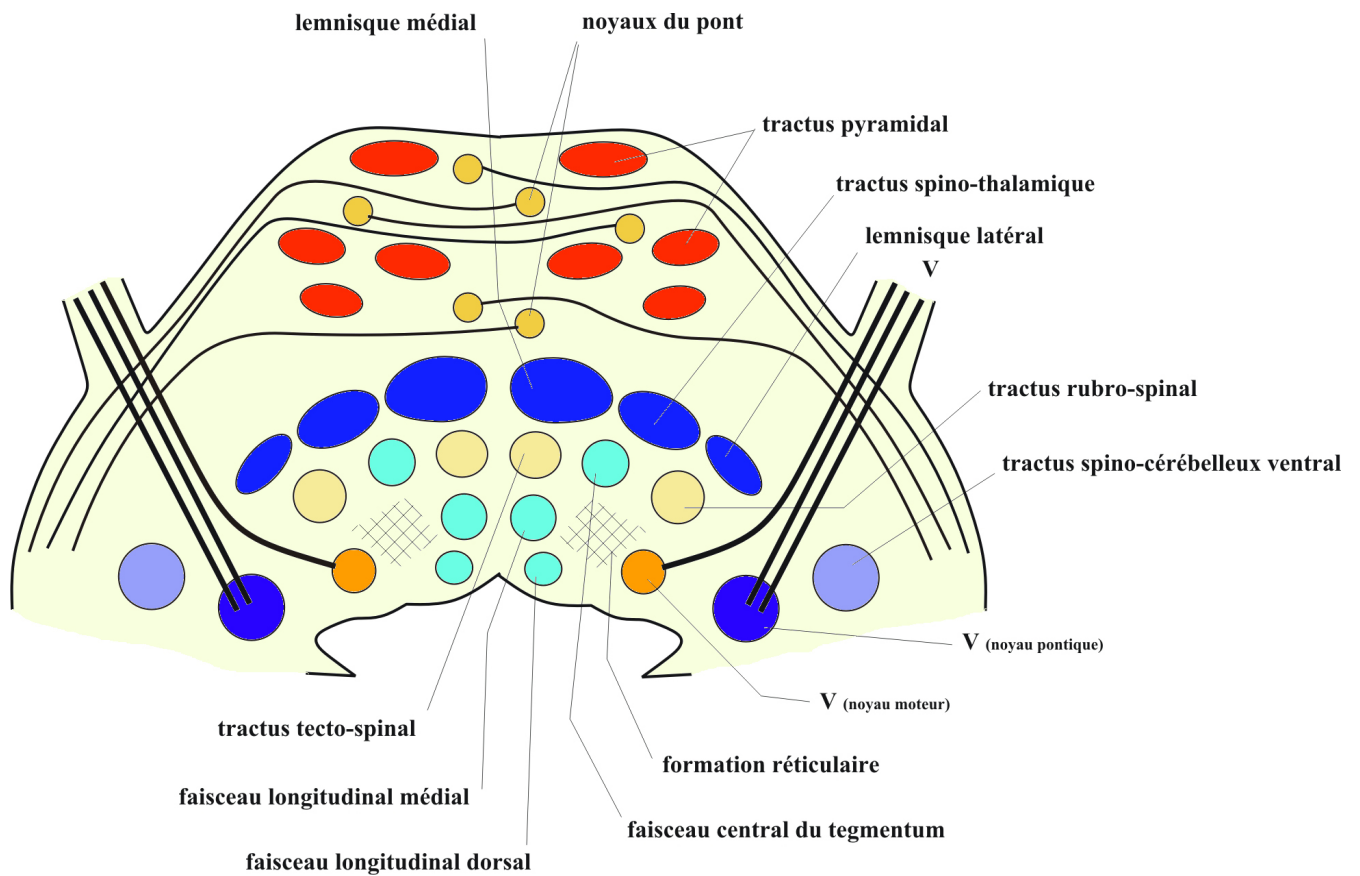
**Coupe 2 passant par la décussation sensitive**



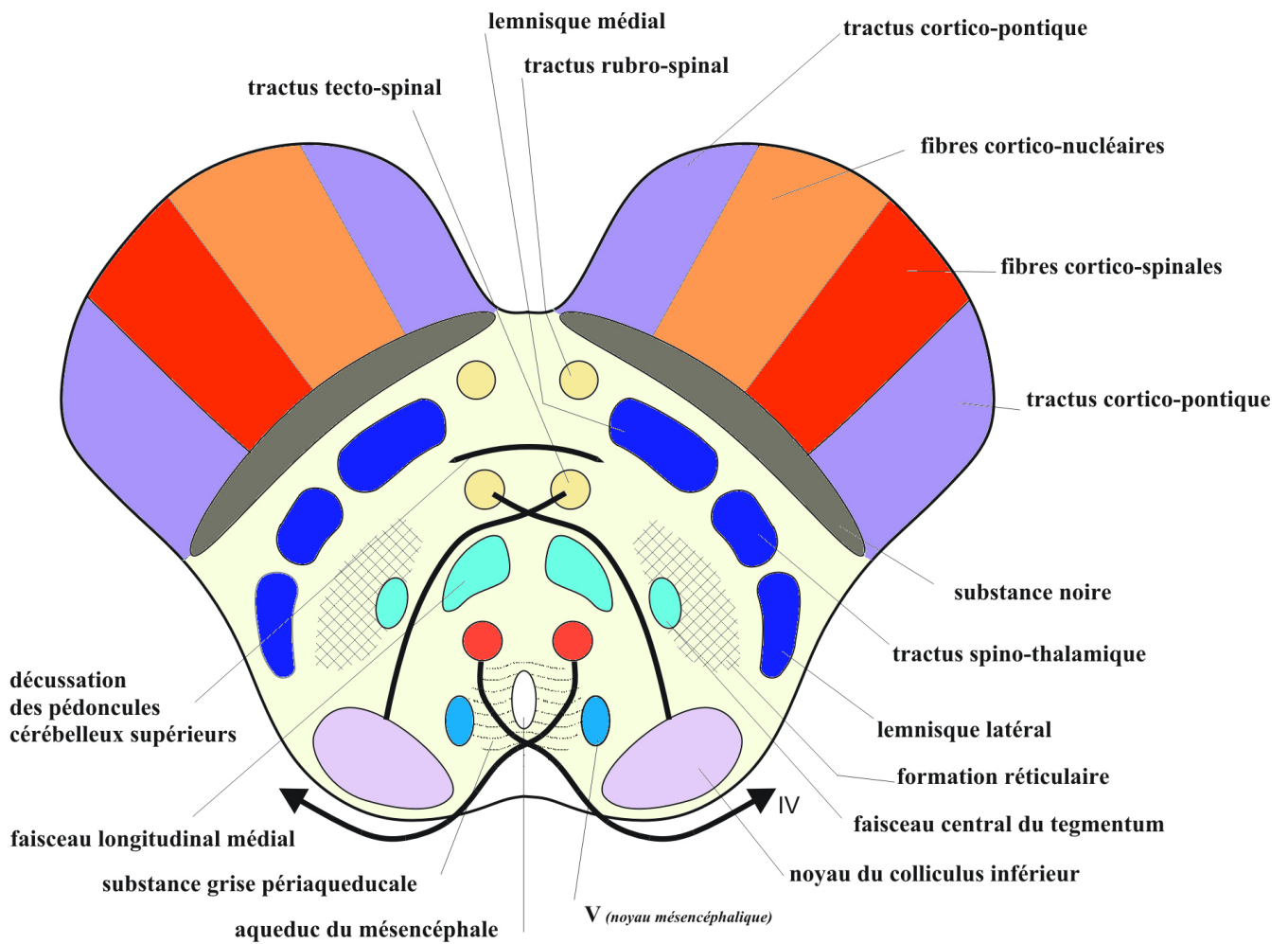
**Coupe 3 passant par l'olive**



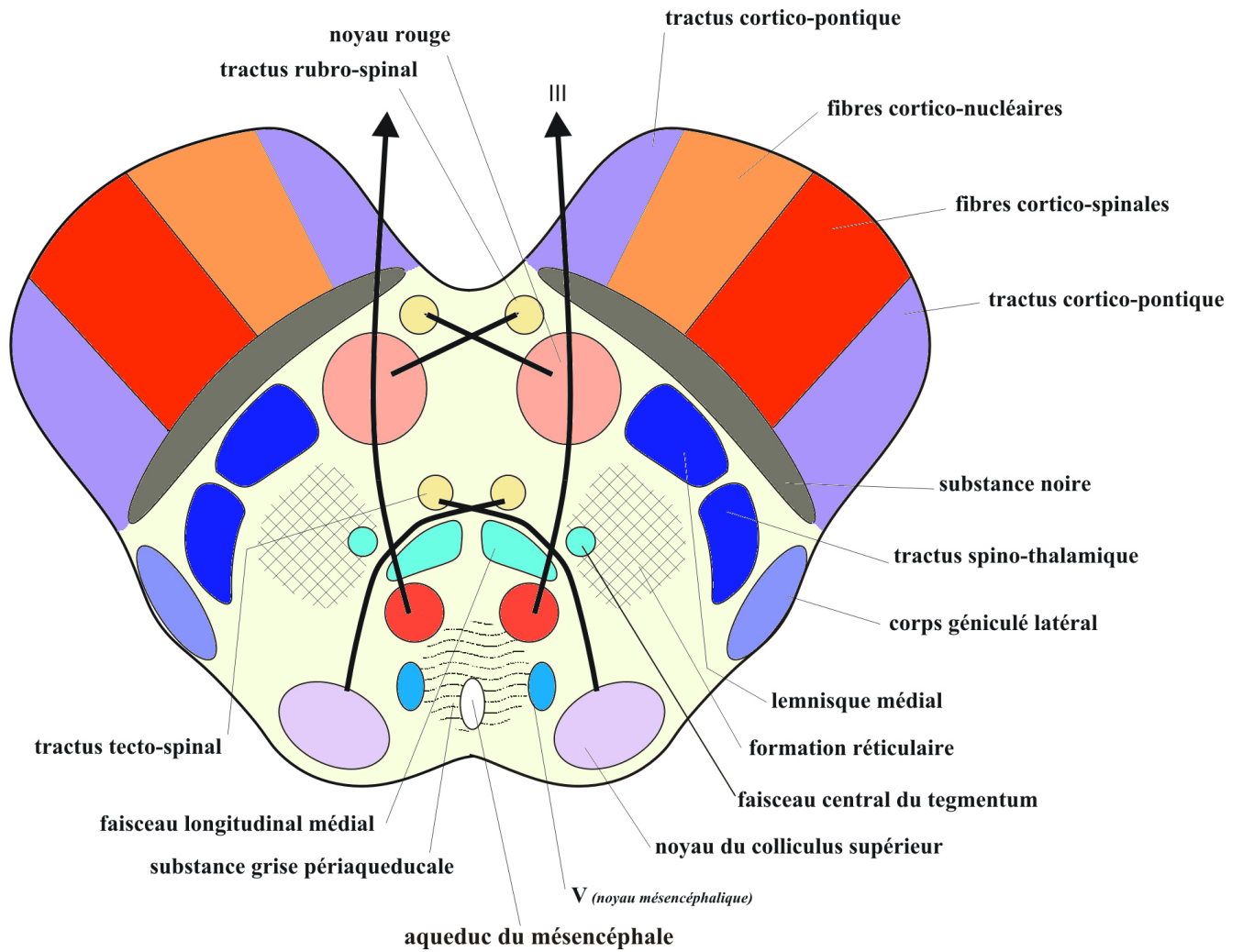
**Coupe 4 passant au-dessus du sillon bulbo-pontique**



**Coupe 5 passant par la partie moyenne du pont**

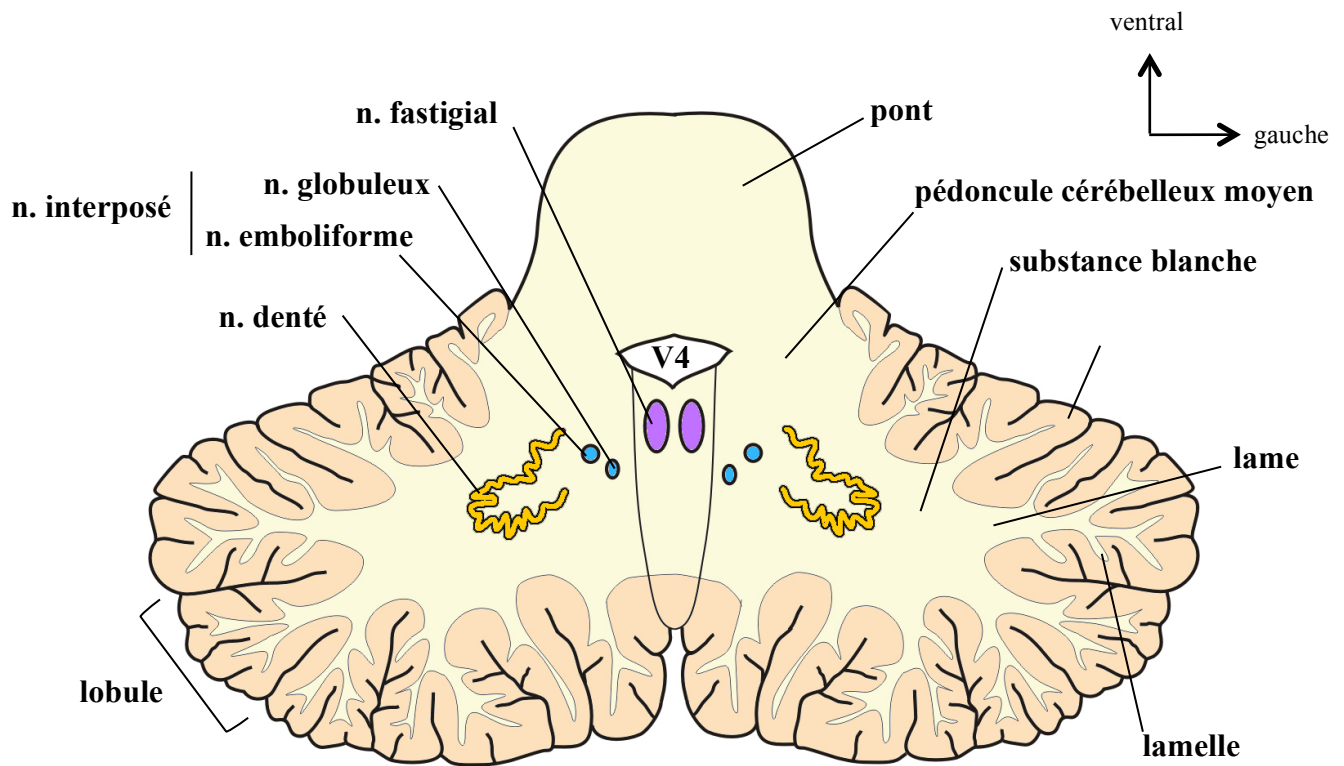


**Coupe 6 passant par le colliculus inférieur**



**Coupe 7 passant par le colliculus supérieur**

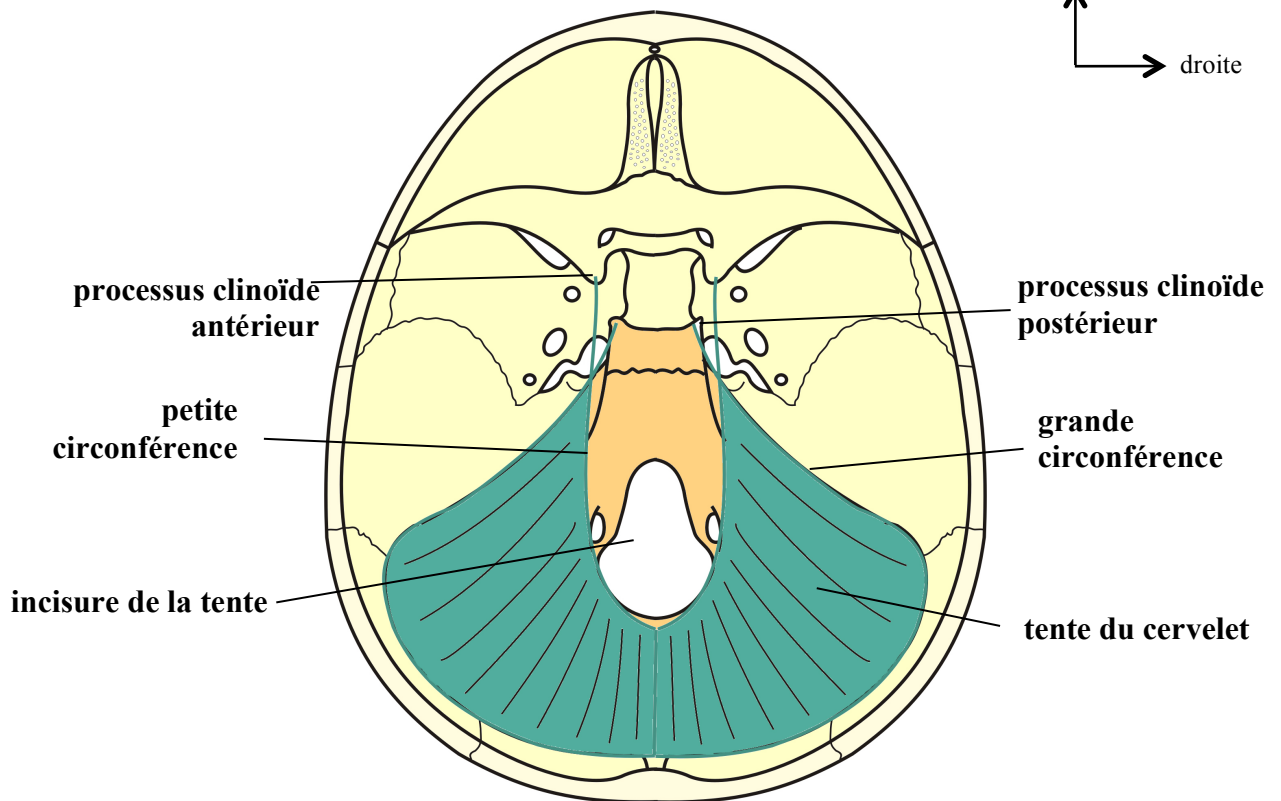
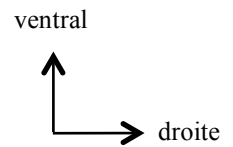
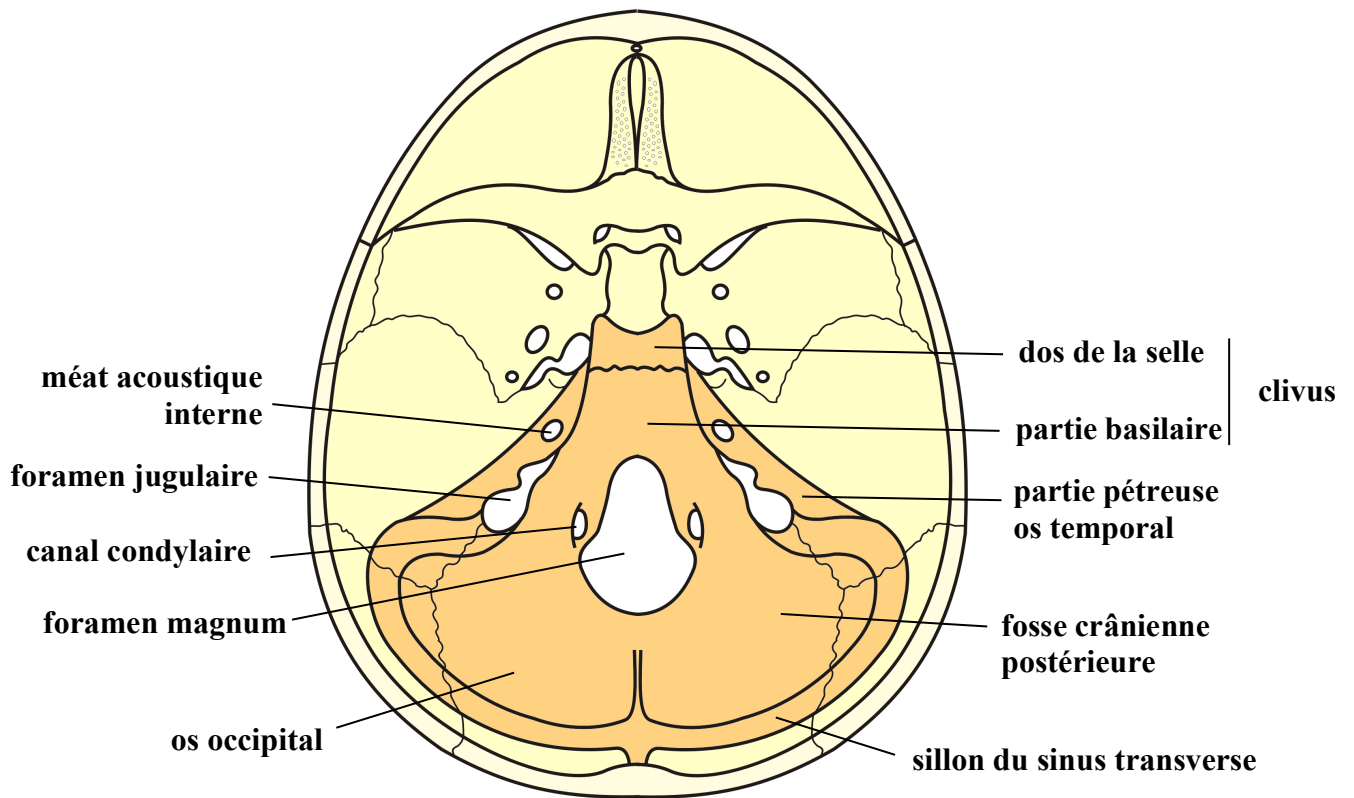




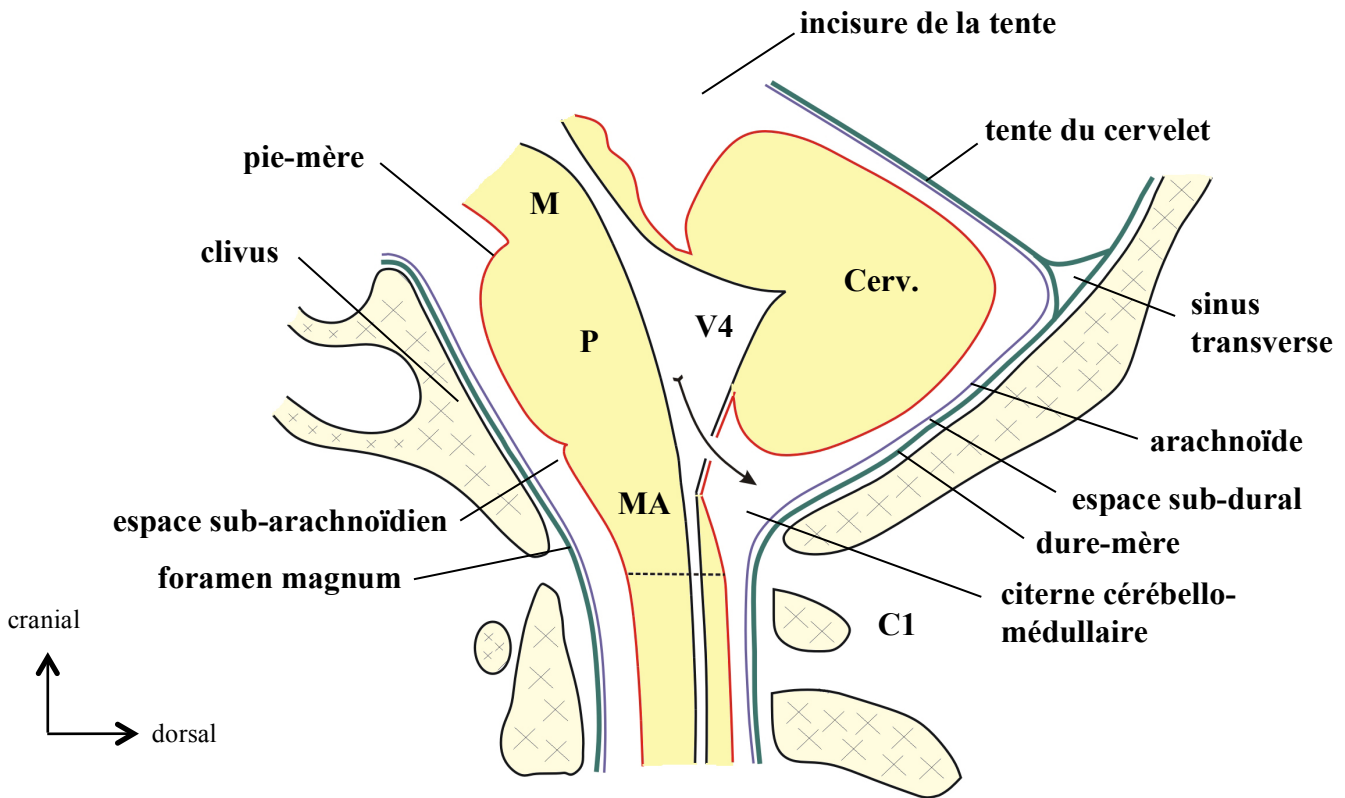
**Structure du cervelet (coupe horizontale)**



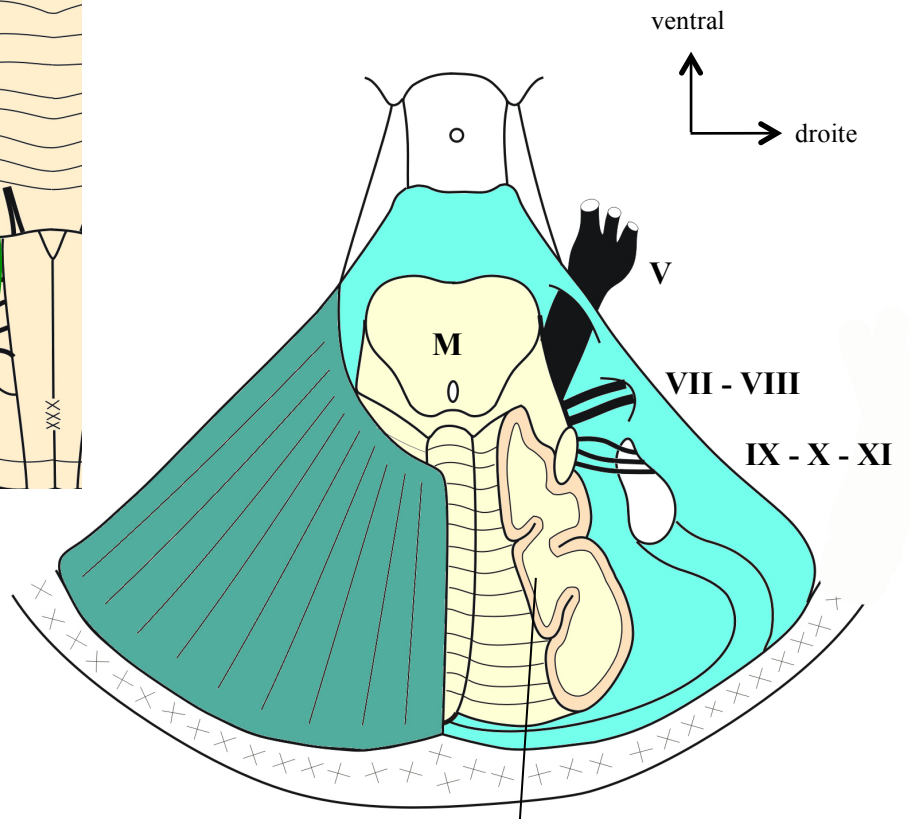
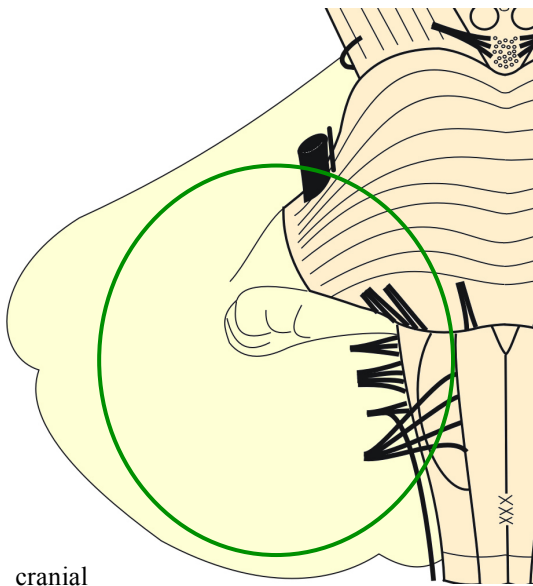
**Coupe sagittale médiane du cervelet montrant l'arbre de vie au niveau du vermis**



**Loge cérébrale postérieure**



**Loge cérébrale postérieure - coupe sagittale médiane**



**section de l'hémisphère cérébelleux**

**L'angle ponto-cérébelleux**