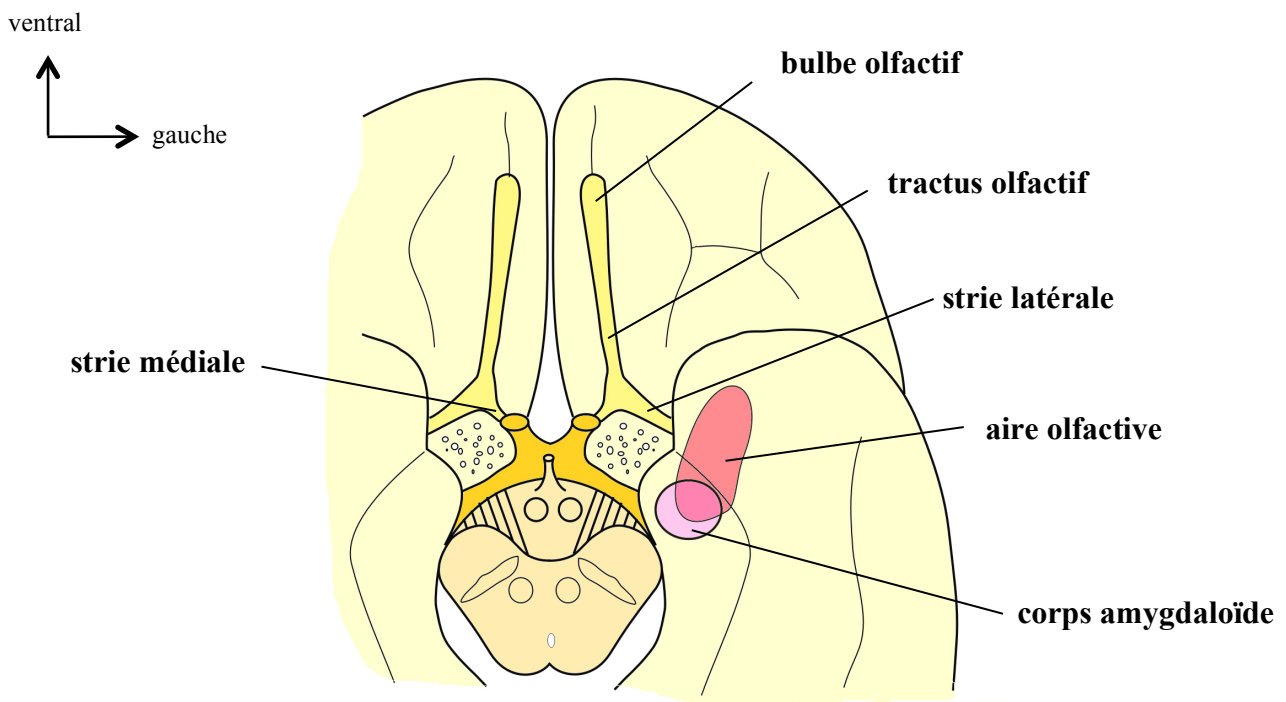
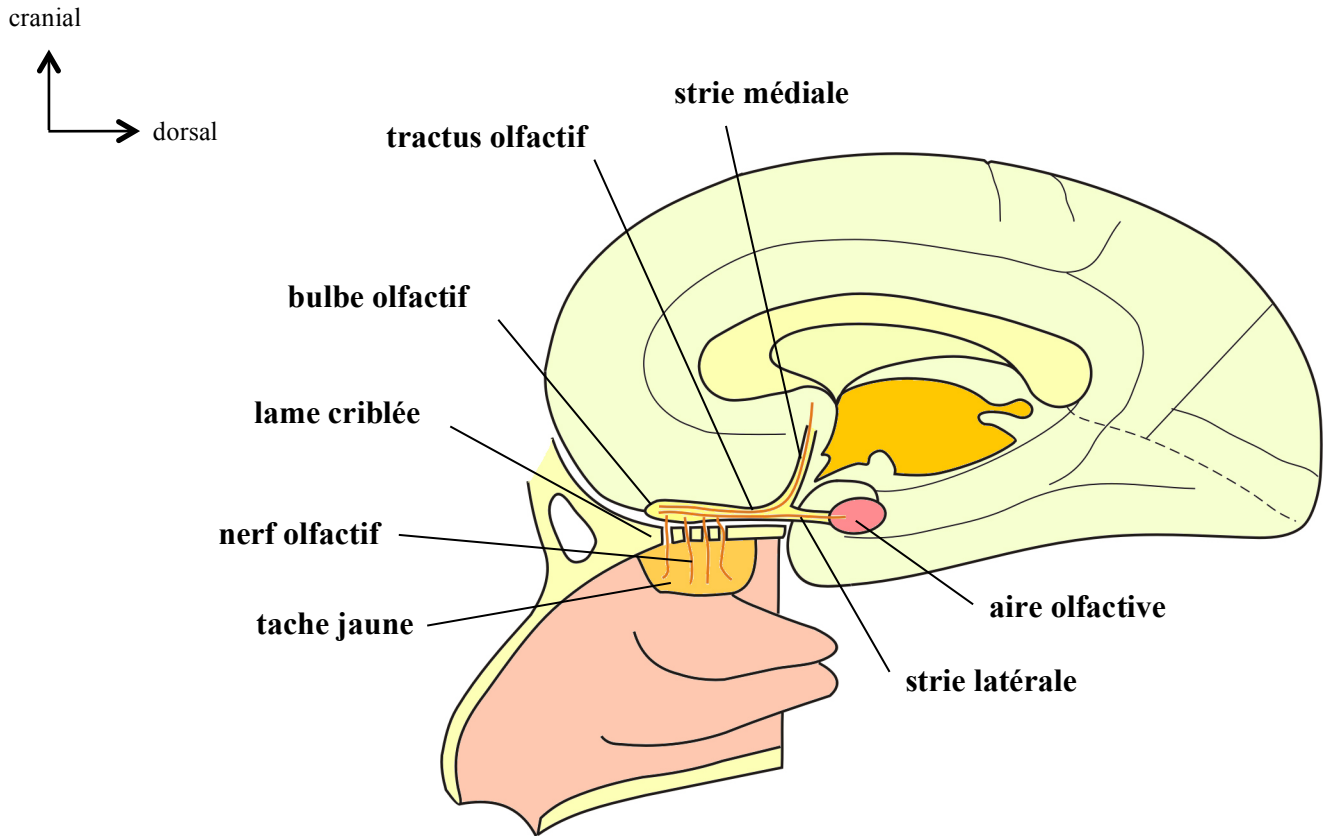
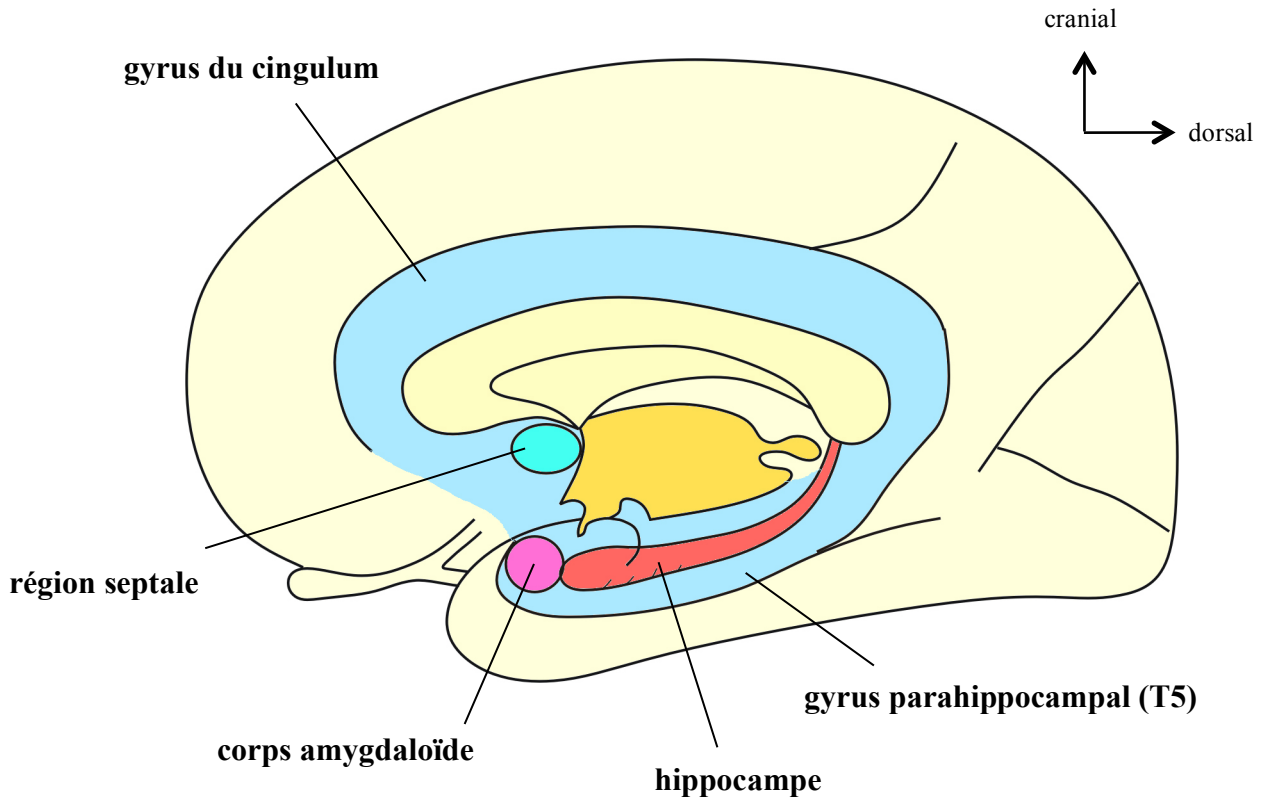


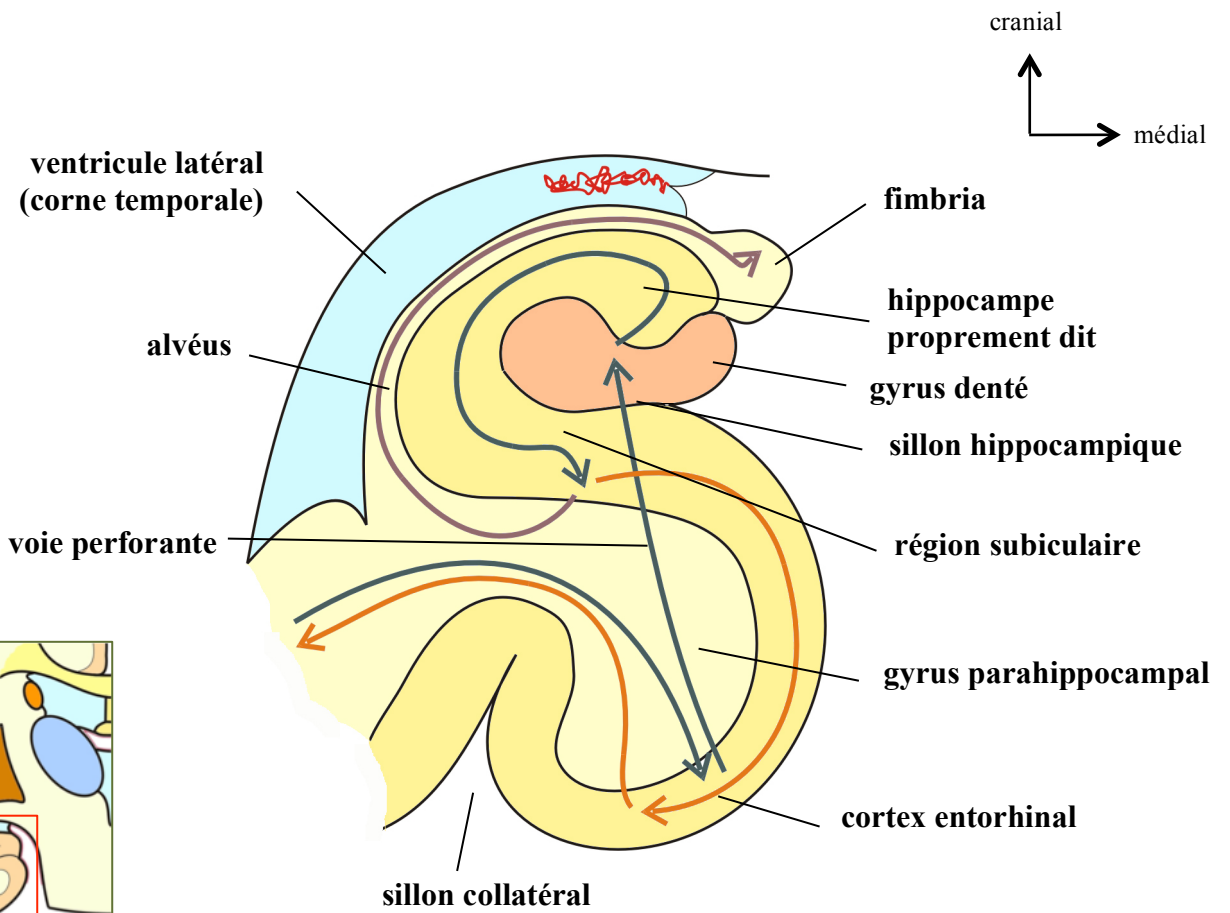
# **SYSTEME LIMBIQUE**



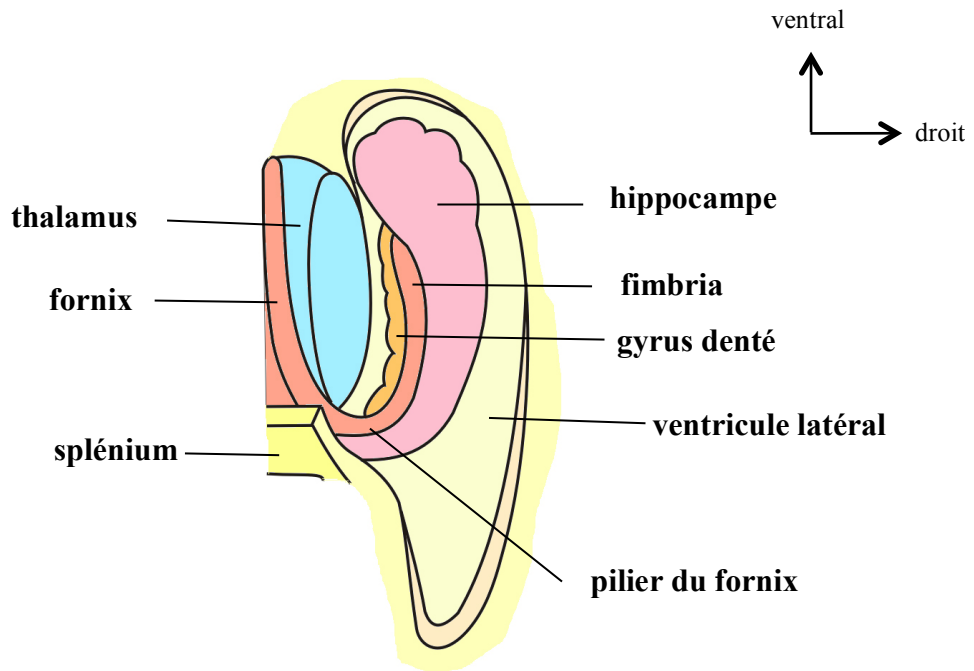
### Les voies olfactives



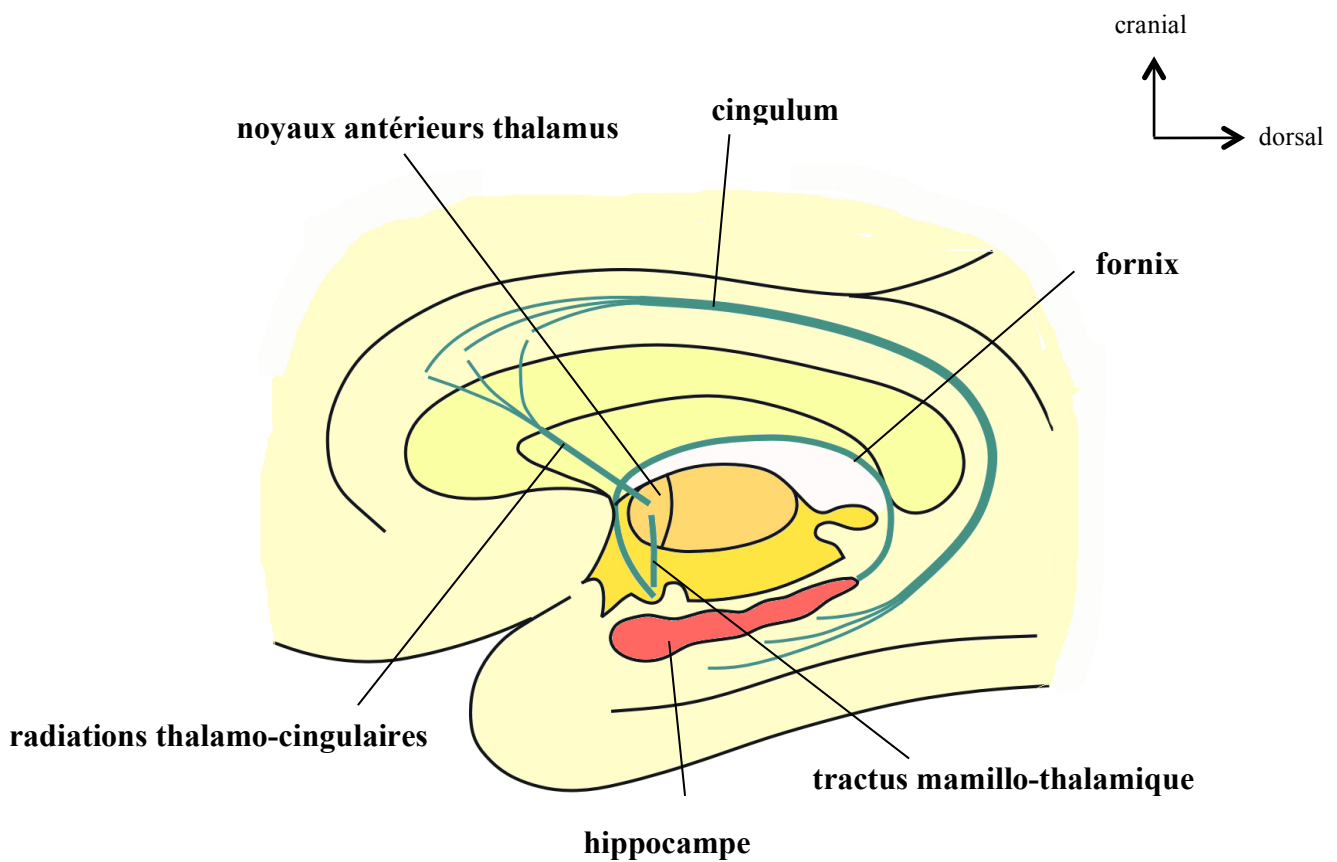
**Les structures du système limbique**



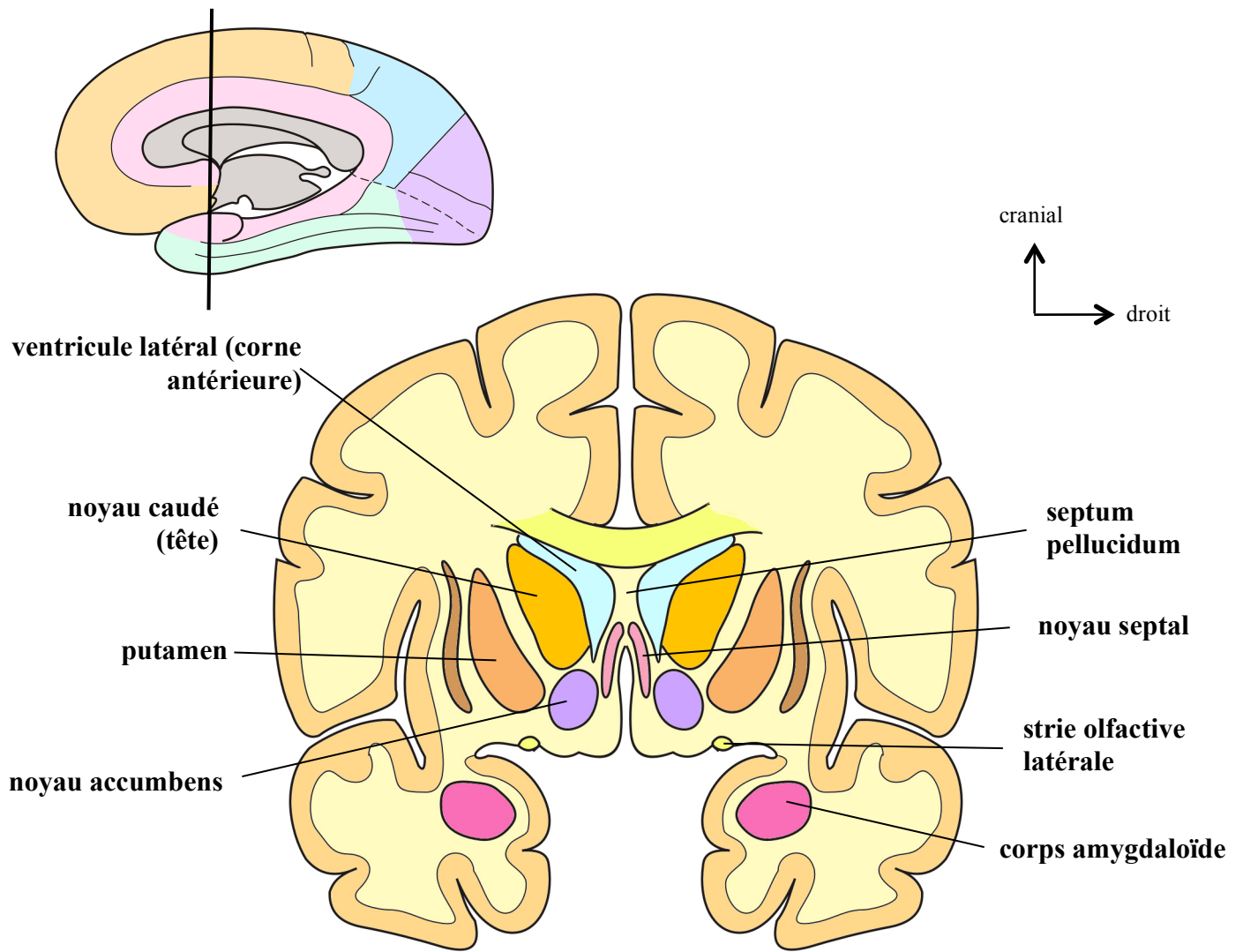
**La formation hippocampique**



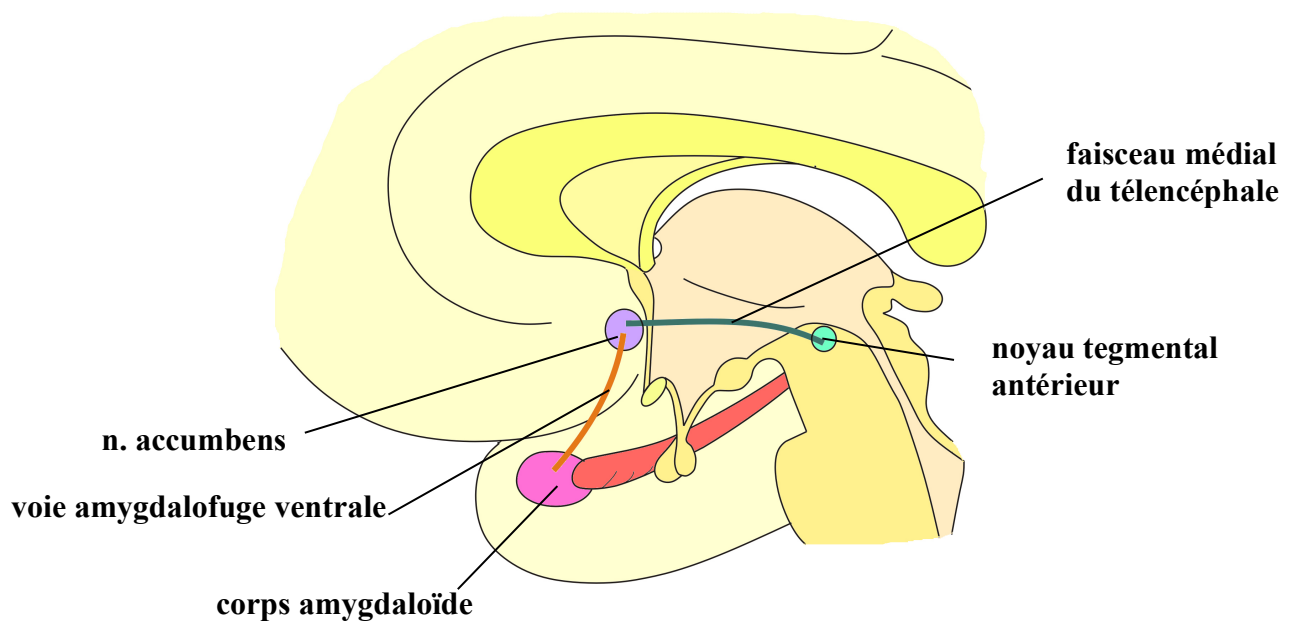
**Formation hippocampique**  
 (vue supérieure après ouverture de la corne inférieure du ventricule latéral)



**Le circuit de Papez**



**Structures du système limbique sur une coupe frontale antérieure**



**Le noyau accumbens**